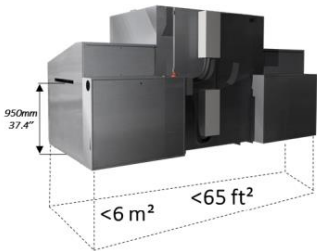




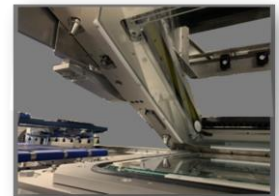
# Fully Automatic Double-Sided Soldermask Exposure



**Optimized Footprint**

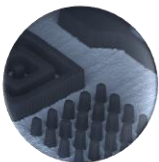


**Dual Screen HMI**



**Upper Rocking Frame**

## Resolution



Min. Dam  $50\mu m$  | 2 mil

## Registration



$\pm 8\mu m$  |  $\pm 0.32 mil$   
Image to Panel

## Throughput



Up to 4 panels/min

## High Savings



-85% Cost of Ownership



# Process Issues



High Energy Requirement for Exposure above 1000mJ +



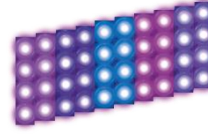
# Altix Solutions



High Power LED Light Source  
4 Wavelengths  
Ideal for Green, White & Color Soldermask Inks



Heat-related Artwork Expansion  
Expansion Scale: 1°C -> 16µm/ml



High Power LED Light Source  
Close to no Heat Transmission



Difficulties to Acquire Ink-Covered Copper Targets



Ultra White LED & Anti-Vibration CCD System  
Ideal for White Soldermask Exposure



High Electricity Consumption



Low Energy Consumption  
4-6 Times Lower than non-LED Sources

Application	Green, White, Black, Orange etc. Inks Soldermask (PSR)	
Exposure Area	Up to 610 x 762mm	Up to 24 x 30"
Panel Thickness	0.05 - 6mm	0.002 - 0.236"
Resolution	Min. Dam 50µm	Min. Dam 2mil
Light Engine	OmniLight™	
Light Intensity	≥ 150mW/cm²	
Exposure Spectrum	Up to 4 LED Wavelengths 365 to 435nm	
Exposure Contact	Soft or Hard Contact Vacuum	CMI™ Available
Throughput**	Up to 4 panels/min	
Alignment (After Vacuum)	±8µm	±0.32mil Image to Panel



Manufacturing, Sales & Service:  
Altix France – Headquarters  
Email: central@altix.fr  
Email: kawa@kawa-gmbh.com



**Imaging with us!**  
[www.altix.fr](http://www.altix.fr)  
[www.kawa-gmbh.com](http://www.kawa-gmbh.com)