

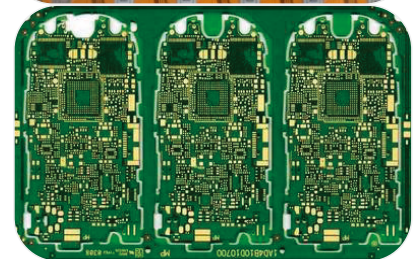
# **THE RAPIER AOI**

■ Promote Craftsman Spirit to Create AOI International Brand

■ Special model for Flexible Printed Circuit & HDI board



**The Rapier-II450**



**Technical Specification**

**The Rapier 2-450 AOI Technical Parameter**

Diagnoses capability	
Testing capability	Best test capability:1.8mil (line width and Line distance) Limit test capability:1.2mil (line width and Line distance)
The thickness of inspection plate	0.01 ~ 10mm
Capacity ( 18"×24" )	2mil 240faces/h      1.8mil 210faces/h      1.5mil 180faces/h
Inspection area	
The biggest size of workbench surface ( X * Y )	26"X28" ( 660X720mm)
The biggest size of inspection plate ( X * Y )	24"X26" ( 610X660mm)
Location mode	Automatic positioning by the edge of the board, no need drilling datum
Table-board drive mode	Driven by precision lead screw and servo motor
Inspection range	
Board form	Inner layer/outer layer    Wiring types include signals, power lines, hybrid shields, grids, and others
Base material	flexible circuit board、HDI.
Imperfection inspection	Short circuit, open circuit, line width and line distance out of tolerance, gap, convex copper, concave copper, pinhole, residual copper, missing hole, spout plug, broken hole, copper deficiency, size and position errors, etc.
Imperfection approval	Approval of maintenance station
Software system	
Operation interface	WIN7 64Bit Support in English and Chinese
Processing software	E-Sight AOI 3200 software
CAM data format	RS-274X GERBER format
Work environment	
Temperature	20°C ~ 25°C
Humidity	40%-60% (non-condensing)
Light source	
Light source type	Patented technology, AOI special LED light source, high brightness and long life
Light source lifetime	More than 10000 hours
Light source power	70W
Energy consumption	
Air source	6 ~ 8Kg.f/cm2
Power source	AC 380V±5%,50Hz,3.7KWh, Three-phase five-wire system
Complete machine energy dissipation	1700W
Volume	
Size	L×W×H 1910mm×1410mm×1820mm
Quality	1500kgs