



international supplies s.r.l.

CONTENTS

- 1 - General specifications
- 2 - Description
- 3 - Installation
- 4 - Operation
- 5 - Maintenance
- 6 - Appendix
- 7 - Spare parts and other data

STRIPMASTER 24"

OPERATION AND MAINTENANCE MANUAL

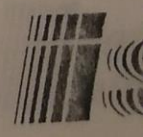
Serial N° _____

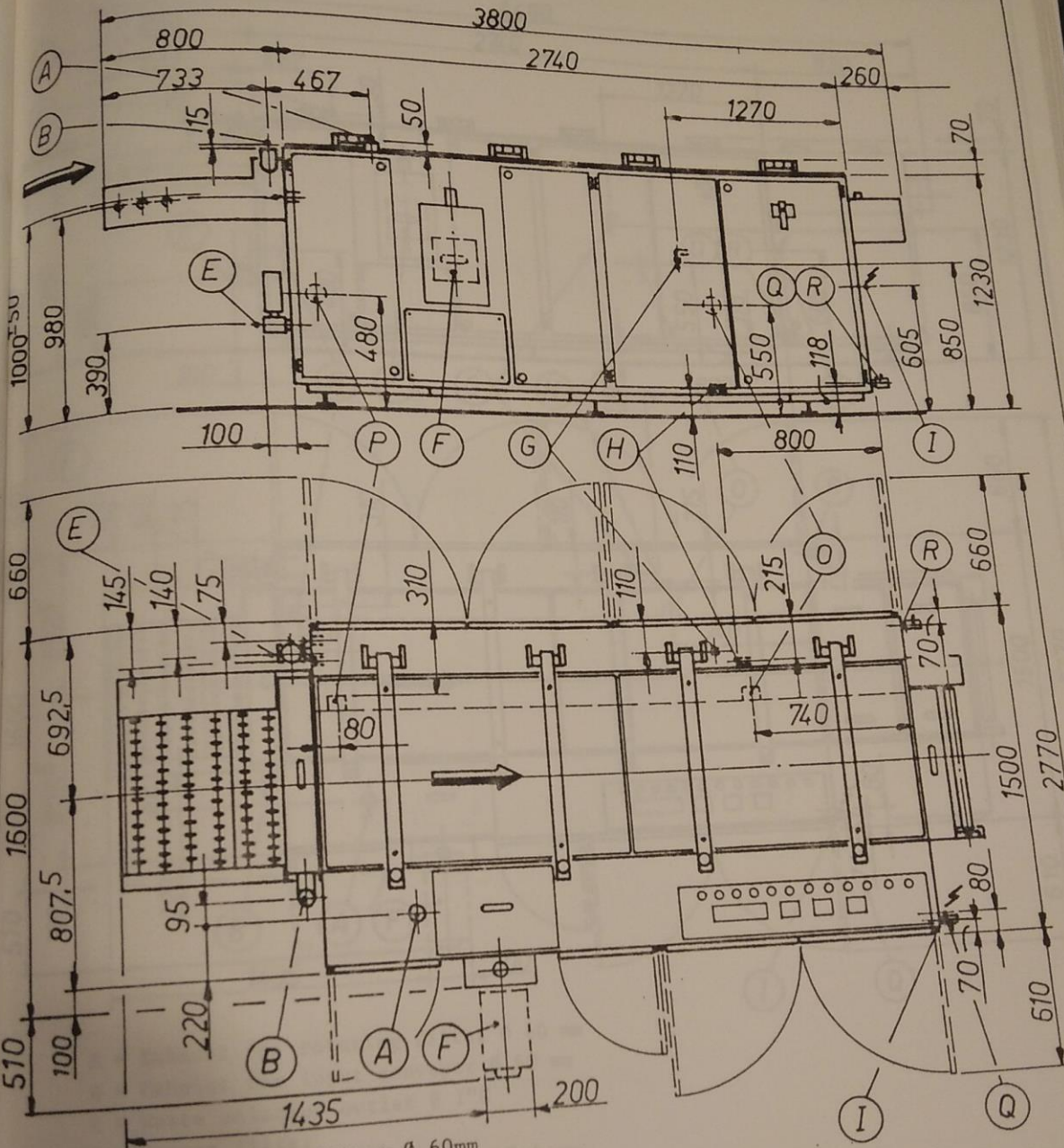
04/90

1. - GENERAL

1.1 - Specifications

- Maximum panel width: 660 mm
- Maximum panel thickness: 5 mm
- Minimum panel thickness: 0.1 mm (inner layers of multilayers)
- Smallest board length: 170 mm
- Conveyor speed: 0 - 4 m/min.
- First stripping chamber: length 1470 mm
capacity of tank 335 litres
- Second stripping chamber: length 370 mm
capacity of tank 90 litres
- Work space: see drawing 01887 and 01901
- Overall dimensions: width 1500 mm
length 3800 mm
height 1300 mm
- Approximate net weight: 1500 kg
- Approximate gross weight: 1800 kg
- Electric power supply: 37 kW 380 Volts, threephase, 50 HZ (others upon request)
- Water consumption: approximately 1200 litres/hour at mains pressure (2 to 3 kg/cm²)





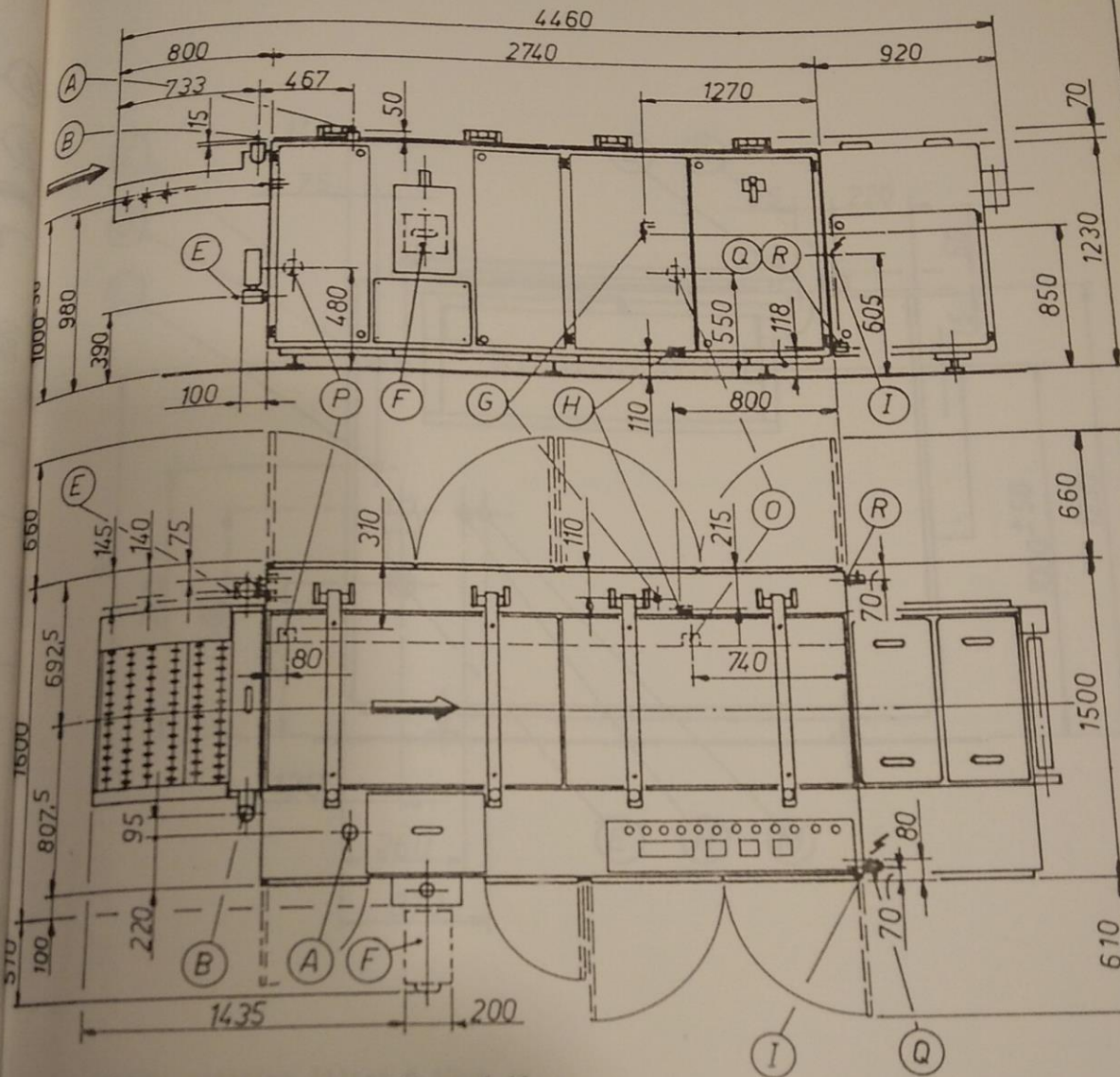
- A = Exhaust for rotating filter \varnothing 60mm
- B = Exhaust for input conveyor \varnothing 60mm
- C = Waste solution outlet \varnothing 1"G
- D = Drawer filter
- E = Concentrated solution inlet \varnothing 6mm
- F = Water rinsing section drain \varnothing 1/2"G
- G = Power supply 35kW
- H = Rinsing water overflow
- I = Overflow
- J = Right hand drain valve for tray \varnothing 1"G
- K = Left hand drain valve for tray \varnothing 1"G



DWG. 01901

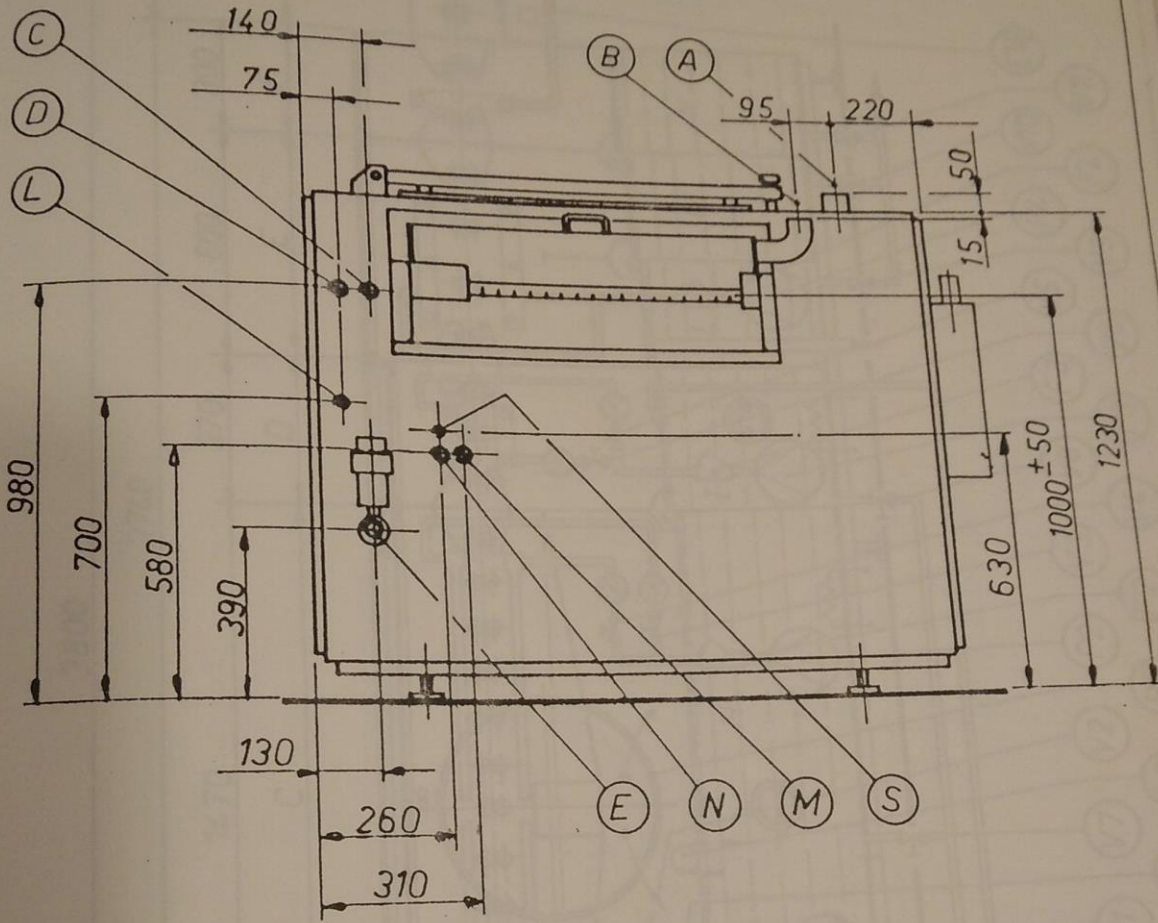
WORK SPACE AND CONNECTIONS

STRIPMASTER 24" WITH SHD DRYING MODULE



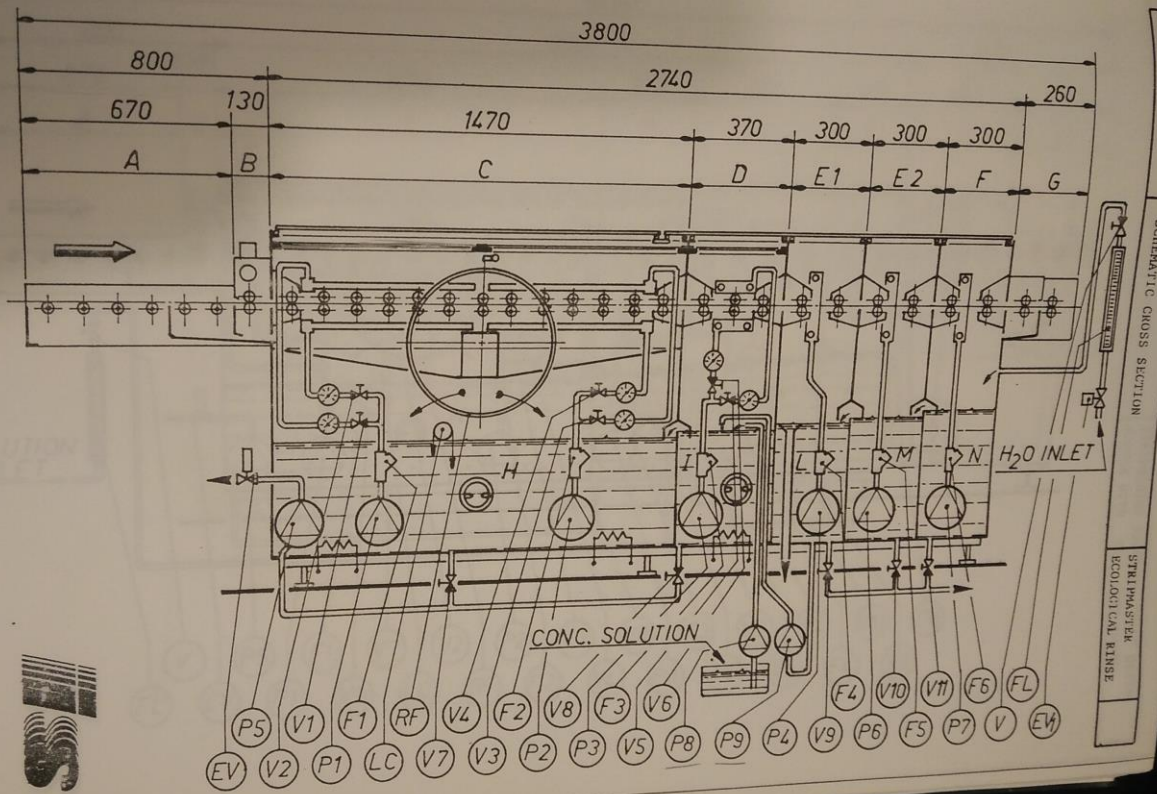
- A = Exhaust for rotating filter \varnothing 60 mm
- B = Exhaust for input conveyor \varnothing 60 mm
- E = Waste solution outlet \varnothing 1" G
- F = Drawer filter
- G = Concentrated solution inlet \varnothing 6 mm
- H = Water rinsing section drain \varnothing 1/2" G
- I = Power supply 35 kW
 - SHD one ring blower 39,2 kW
 - SHD two ring blowers 41,4 kW
- O = Rinsing water overflow
- P = Overflow
- Q = Right hand drain valve for tray \varnothing 1" G
- R = Left hand drain valve for tray \varnothing 1" G



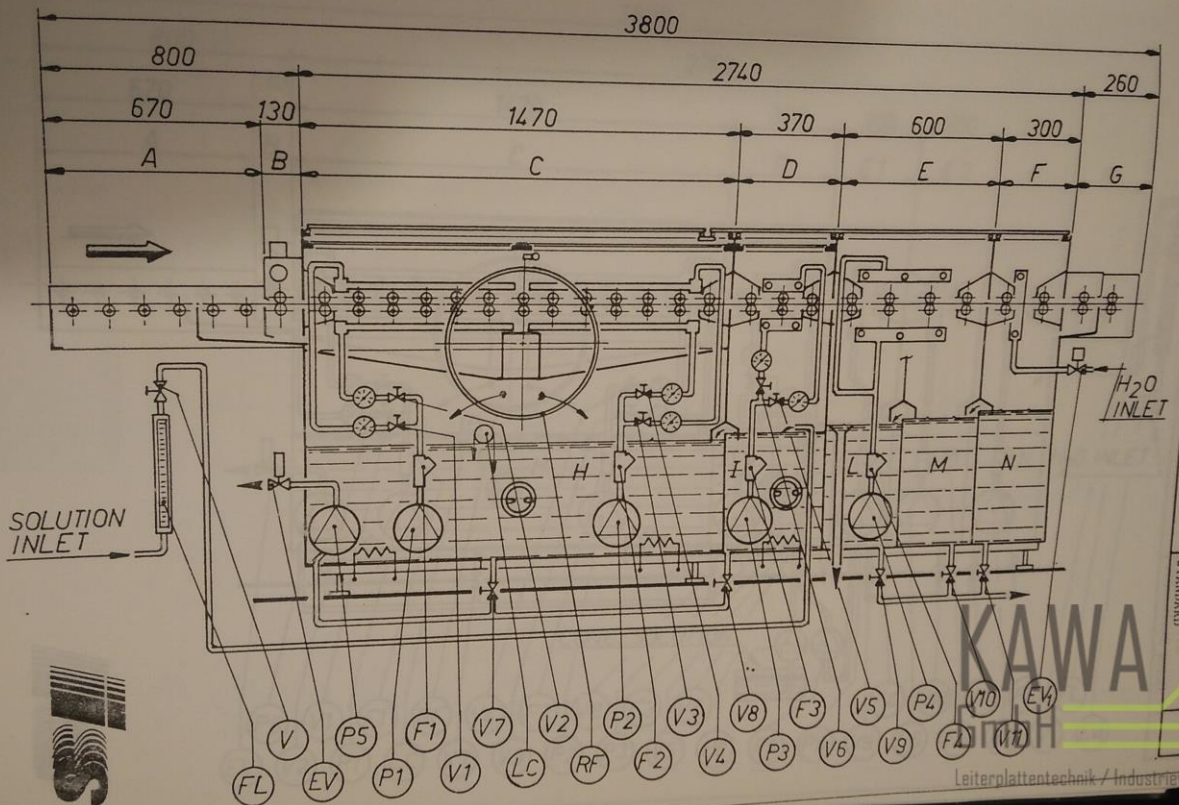


- A = Exhaust rotating filter ϕ 60mm
- B = Exhaust for input conveyor ϕ 60mm
- C = Fresh solution inlet for filling of machine ϕ 1/2"G.
- D = Water inlet with flowmeter ϕ 1/2"G.
- E = Waste solution outlet ϕ 1"G.
- L = Compressed air connection ϕ 1/4"G.
- M = Cooling water outlet ϕ 1/2"G.
- N = Cooling water inlet ϕ 1/2"G.
- S = Antifoam inlet ϕ 1/4" G





DWG. 01454
SCHEMATIC CROSS SECTION
STRI MASTER
ECOLOGICAL RINSE



DWG. 01453
SCHEMATIC CROSS SECTION
STRI MASTER
STANDARD

KAWA
Leiterplattentechnik / Industrieverfahren