

Multilayer Lay



KAWA
AUTOMATION SYSTEMS

KAWA
GmbH

Leiterplattentechnik / Industrievertretung



KAWA
AUTOMATION SYSTEM MS

KAWA
LEITERPLATTENTECHNIK / INDUSTRIEVERTRETUNG



KAWA
GmbH
Leiterplattentechnik / Industrievertretung



WURTH
ELEKTRONIK
MORE THAN
YOU EXPECT

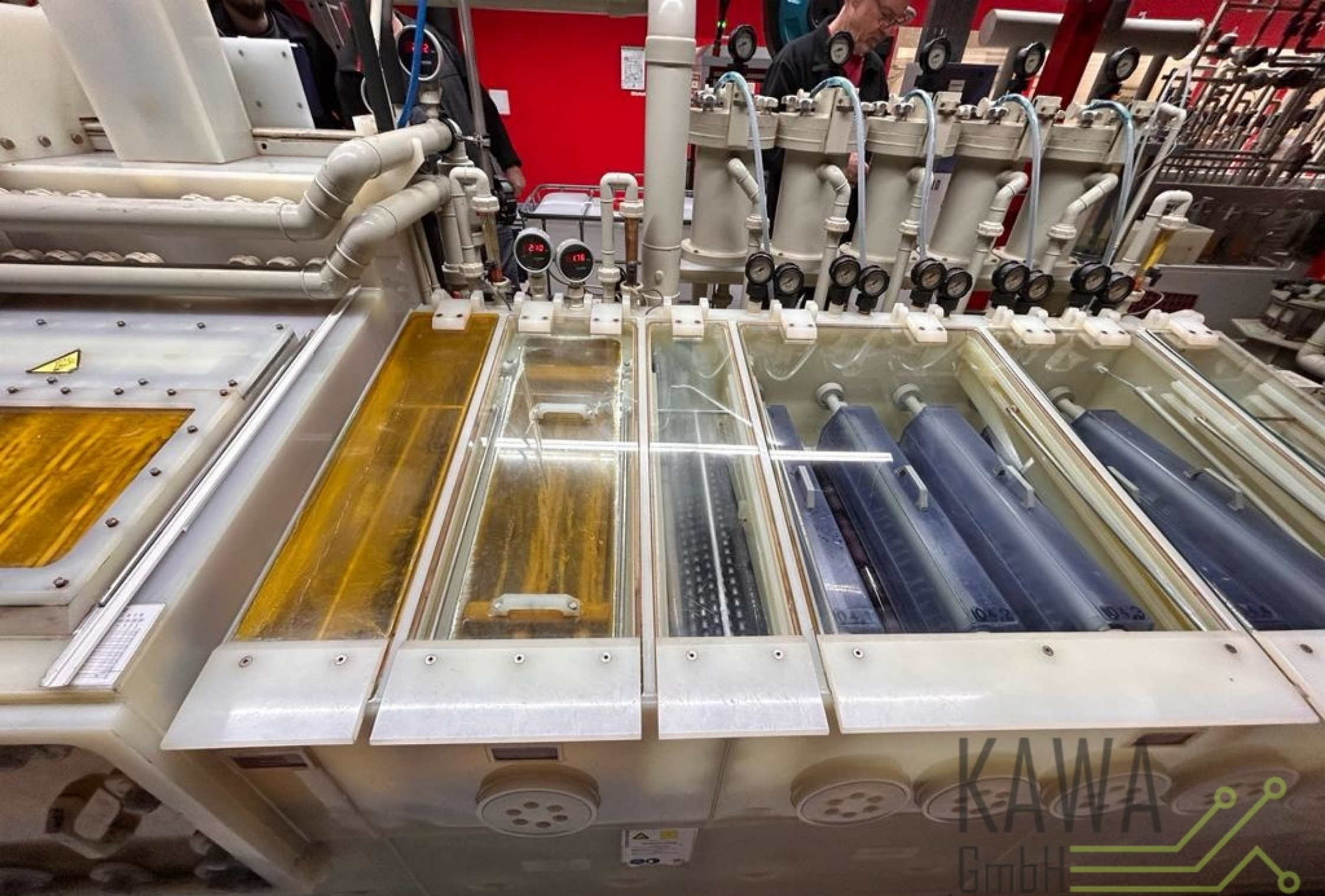


VT-20.01.2023 WENT 400



KAWA
GmbH

Leiterplattentechnik / Industrievertretung



KAWA
GmbH

Leiterplattentechnik / Industrievertretung



KAWA
GmbH

Wärmeübertragungstechnik / Industrievertretung



KAWA
GmbH

Industrie- / Technik / Industrievertretung



PremiumLine

000

KAWA
GmbH

Leiterplattentechnik / Industrievertretung



XA8.1
XA00



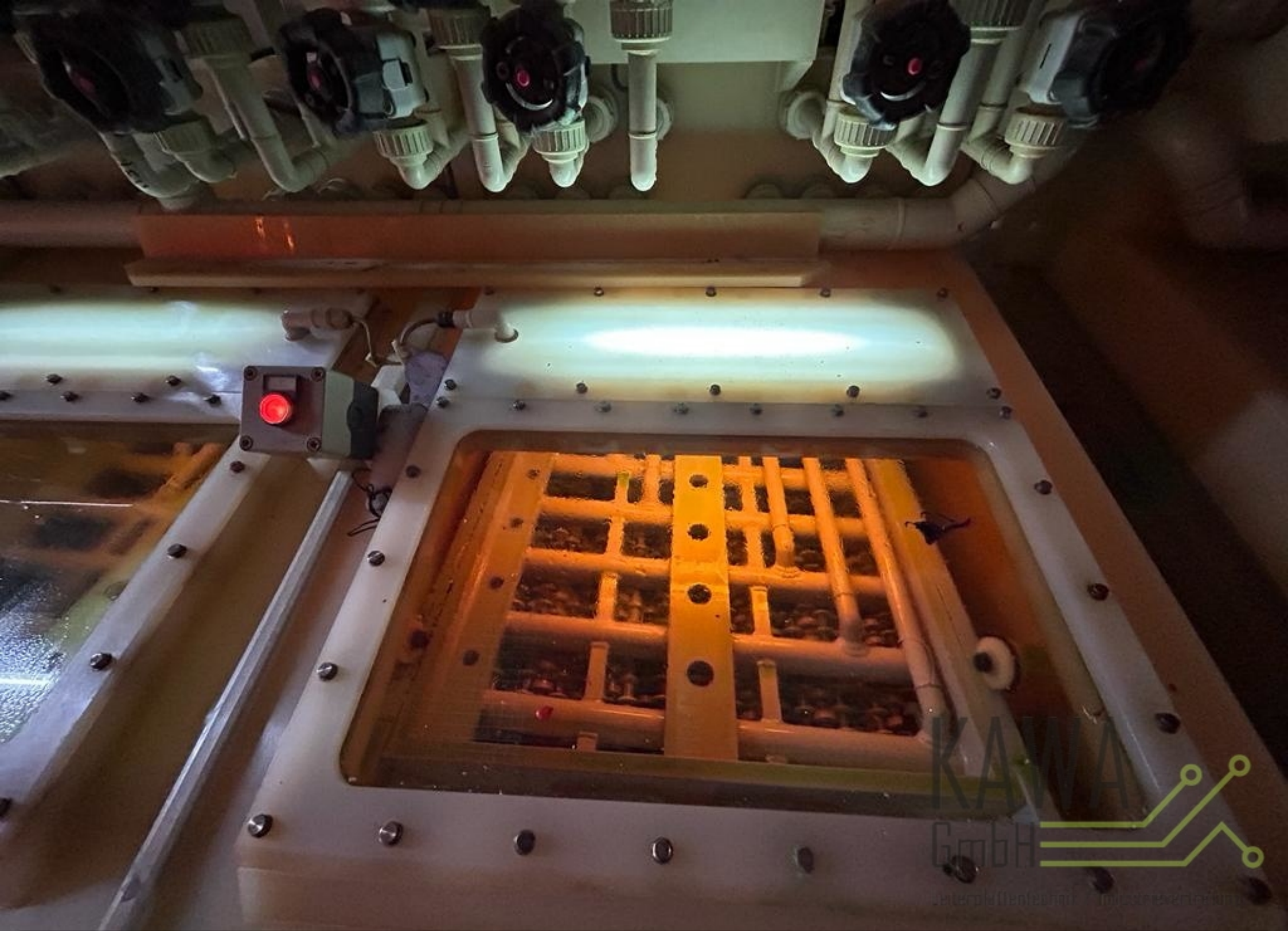
XAB

KAWA
GmbH
Industrietechnik / Industrietreifung



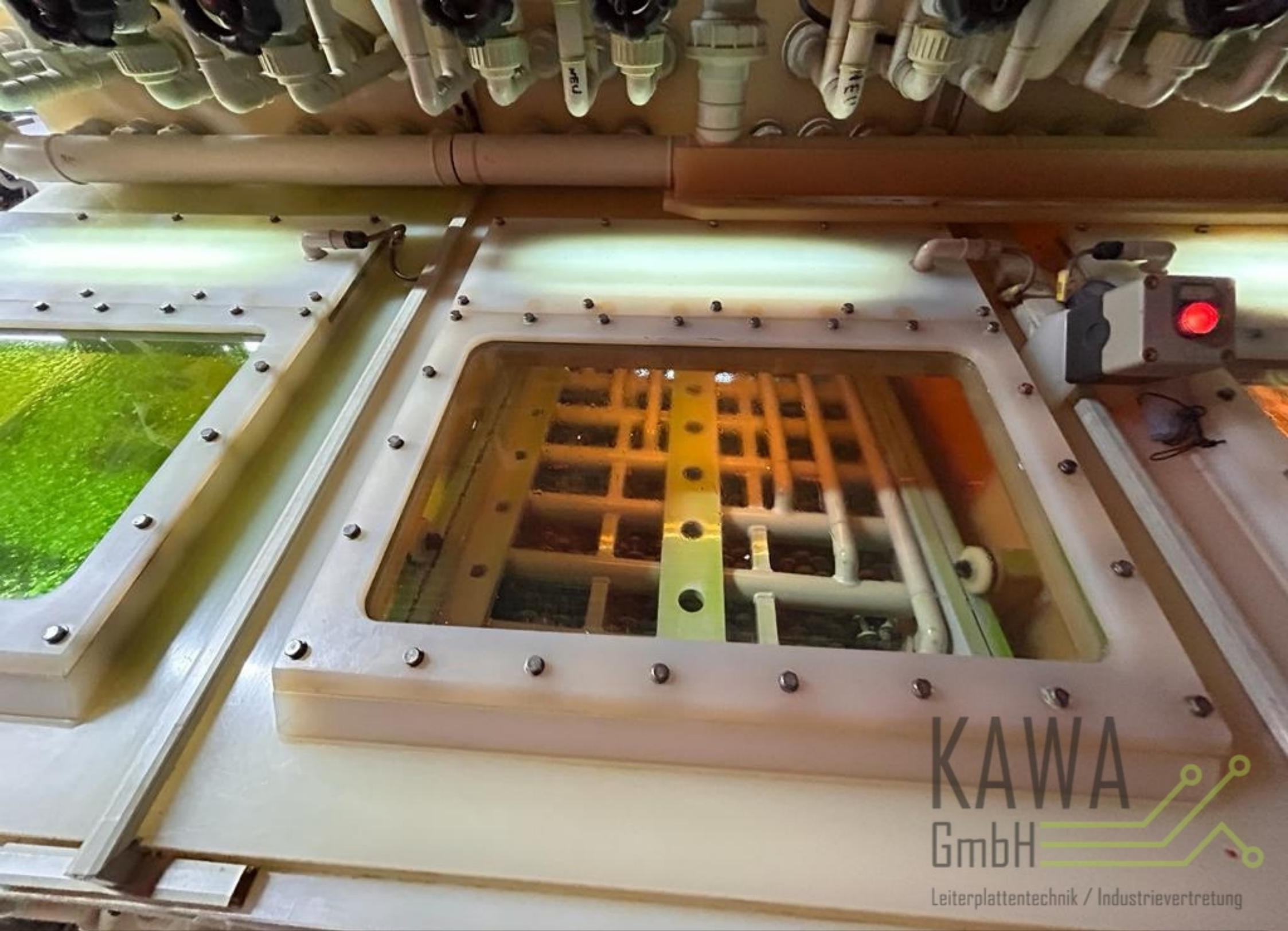
KAWA
GmbH

Leiterplattentechnik / Industrievertretung



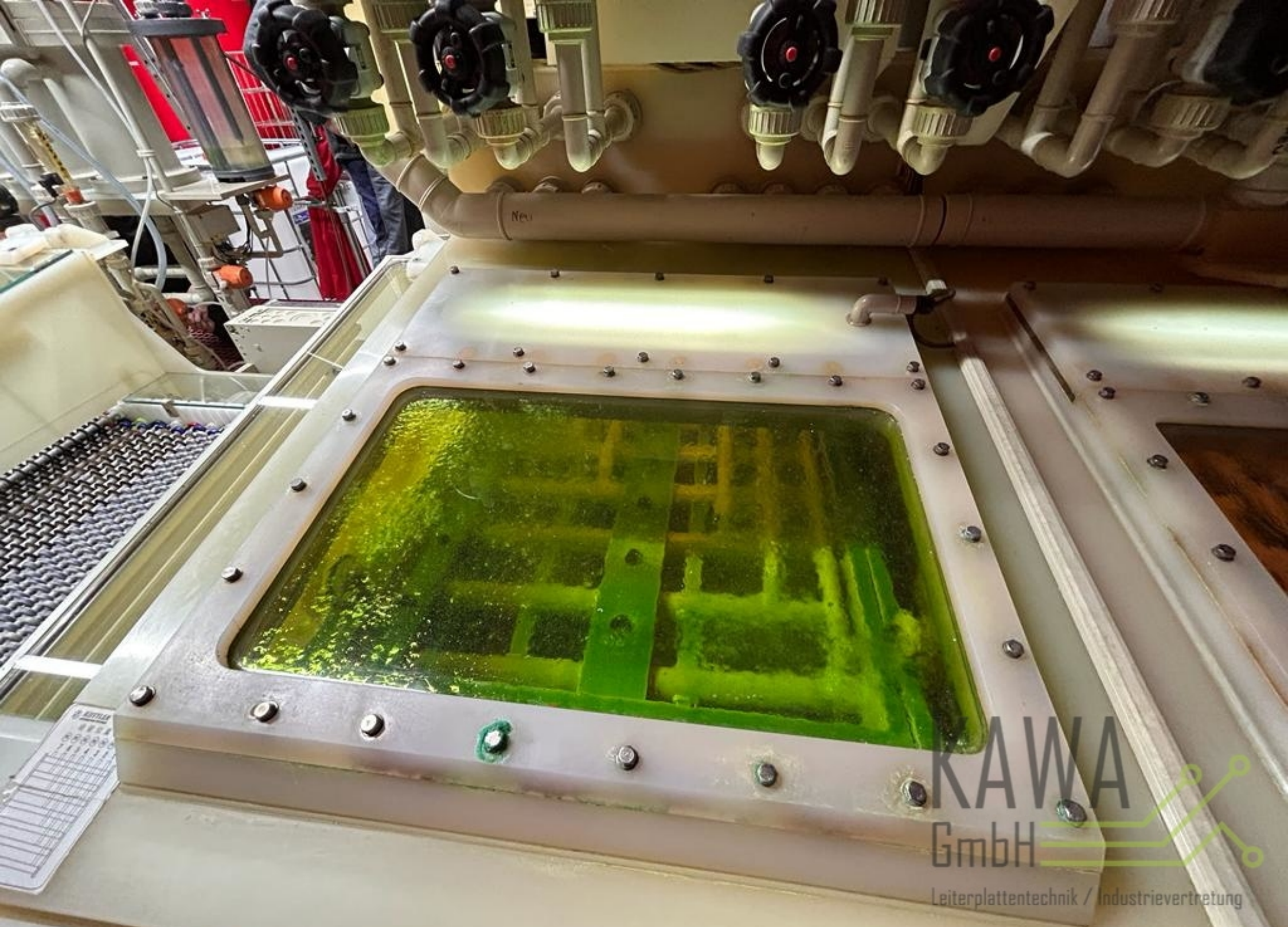
KANVA
GmbH

Lehrfeld 11, 42699 Solingen, Germany
Tel: +49 212 2400-100, Fax: +49 212 2400-101



KAWA
GmbH

Leiterplattentechnik / Industrievertretung



KAWA
GmbH
Leiterplattentechnik / Industrievertretung



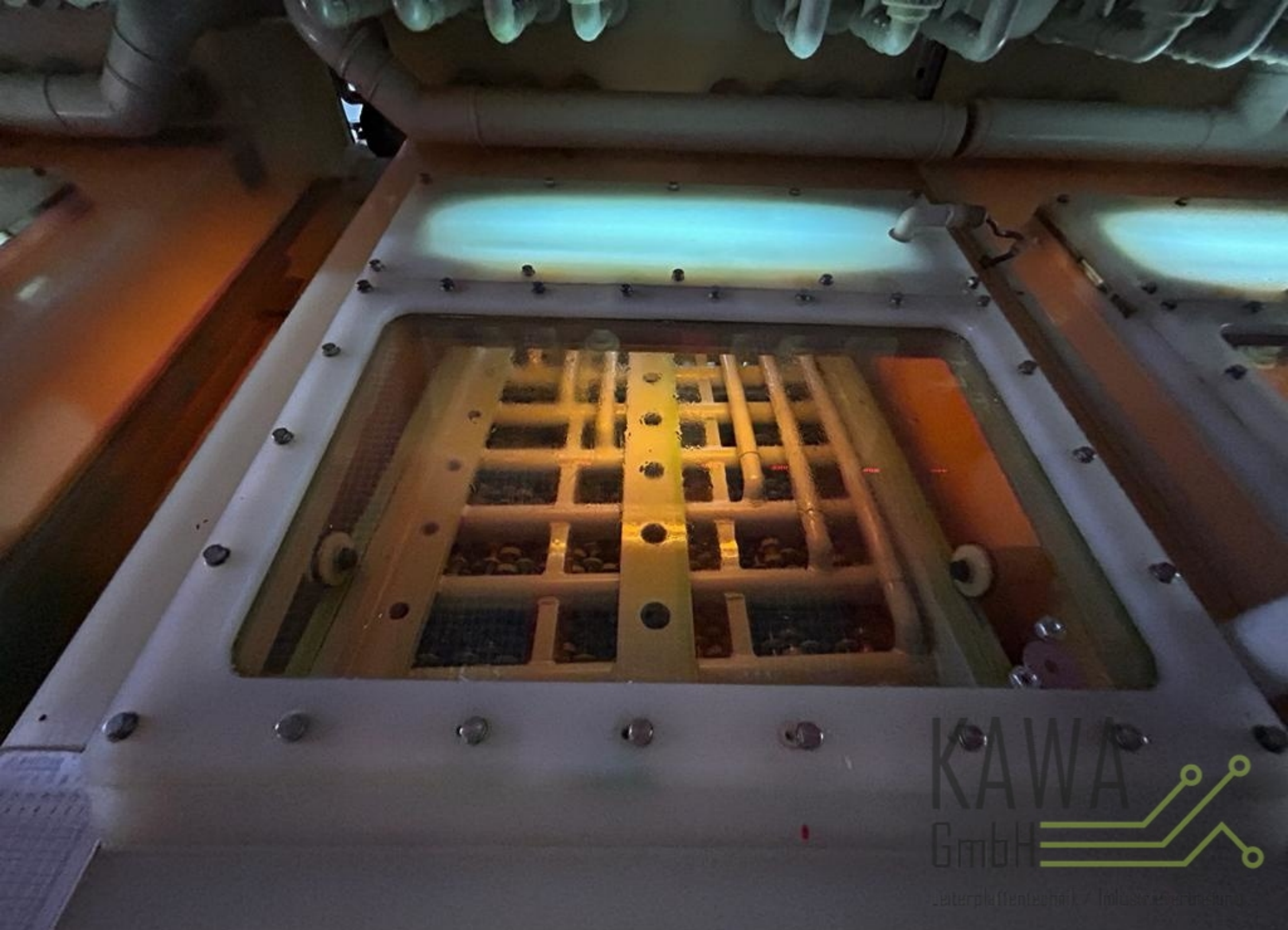
KAWA
GmbH

Leiterplattentechnik / Industrievertretung



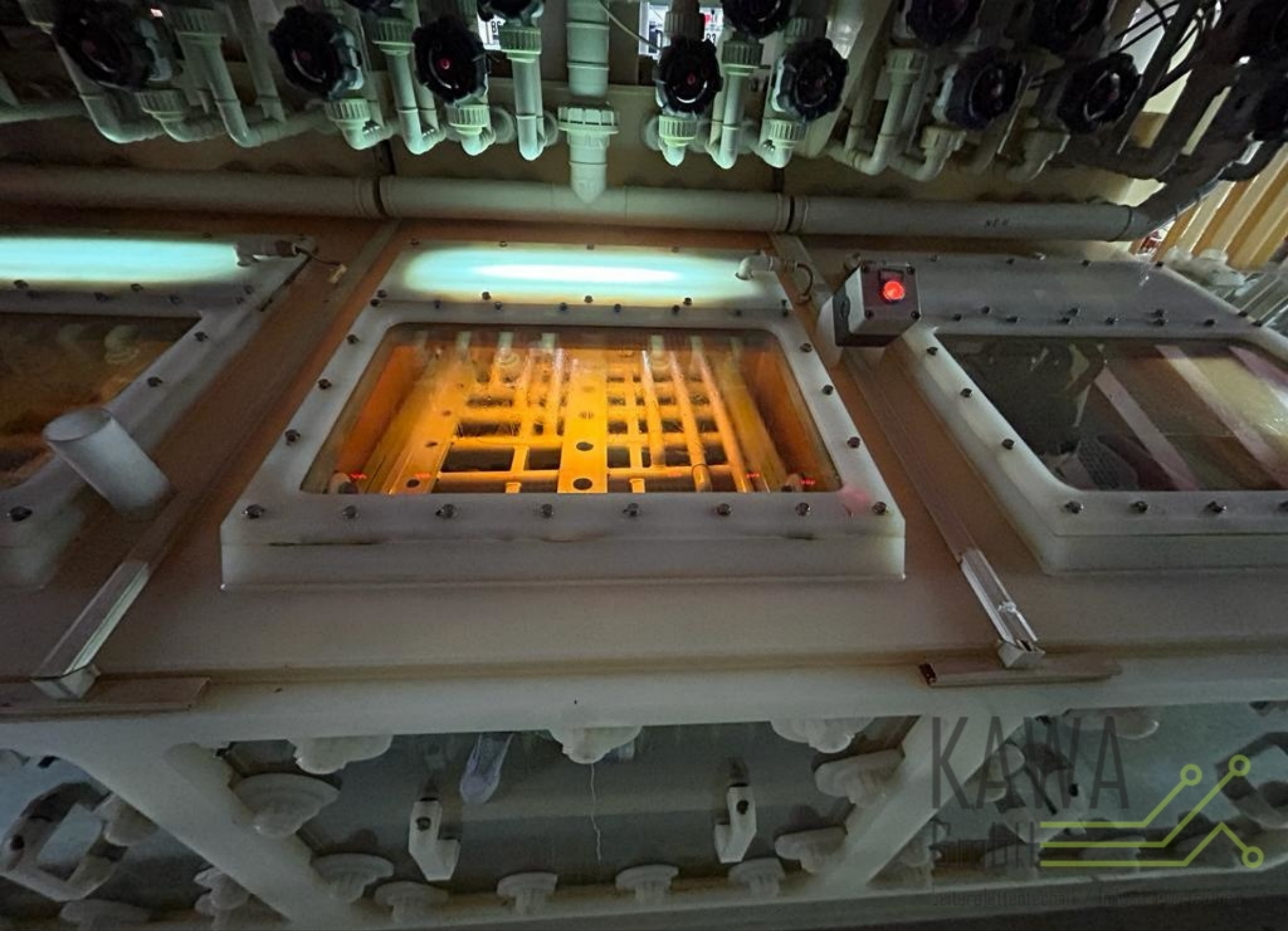
SAFETY INFORMATION
Read the manual carefully before operating the machine.
Warning symbols:
- High voltage
- Hot surfaces
- Moving parts
- Laser radiation
Safety icons:
- Prohibit smoking
- No open flames
- No drinking
- No eating
- No walking
- No running

KAWA
GmbH
Leiterplattentechnik / Industrievertretung



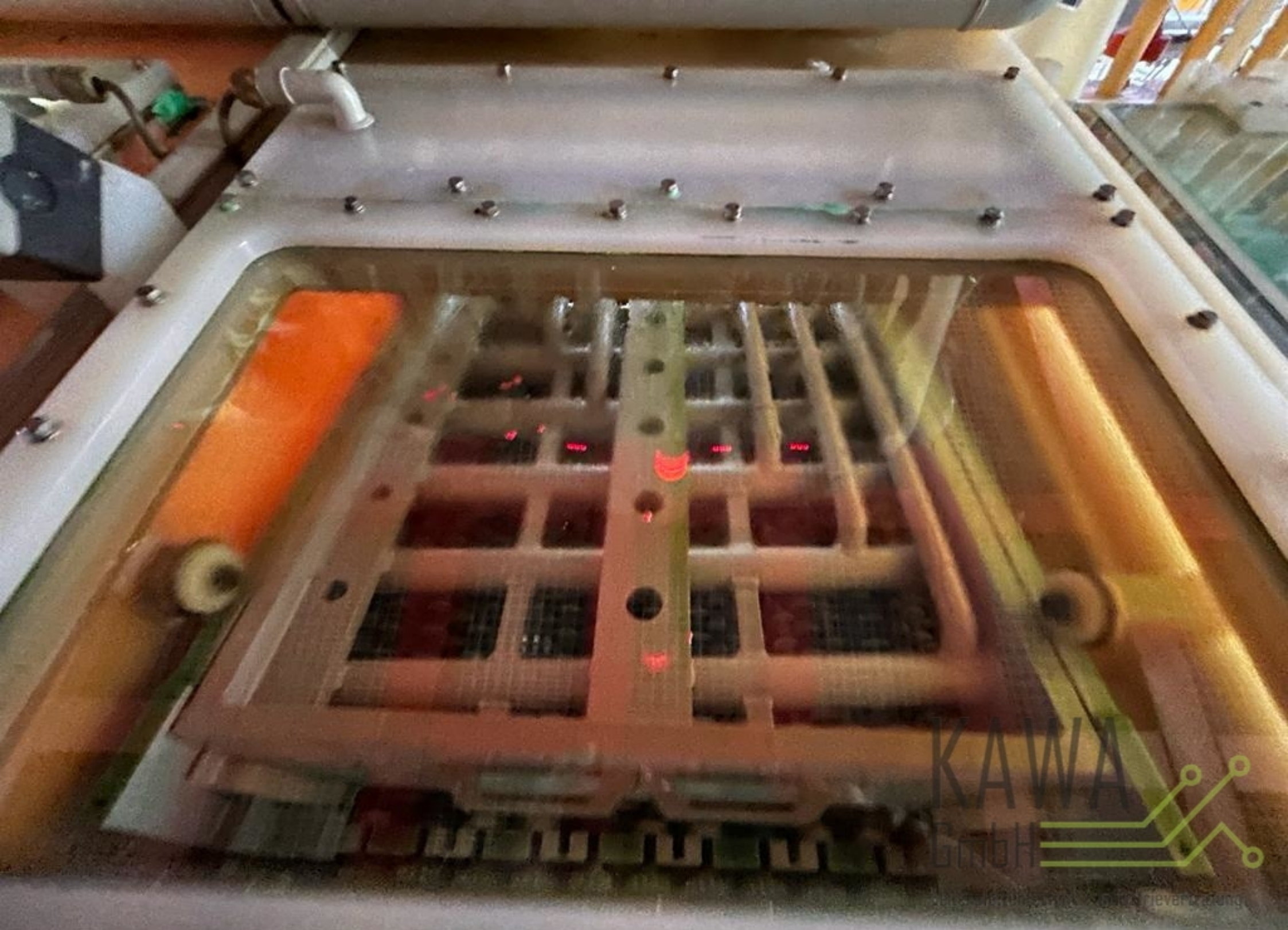
KAWA
GmbH

Leiterplattentechnik / Industriemaschinen



KAWA





KAWA
GmbH

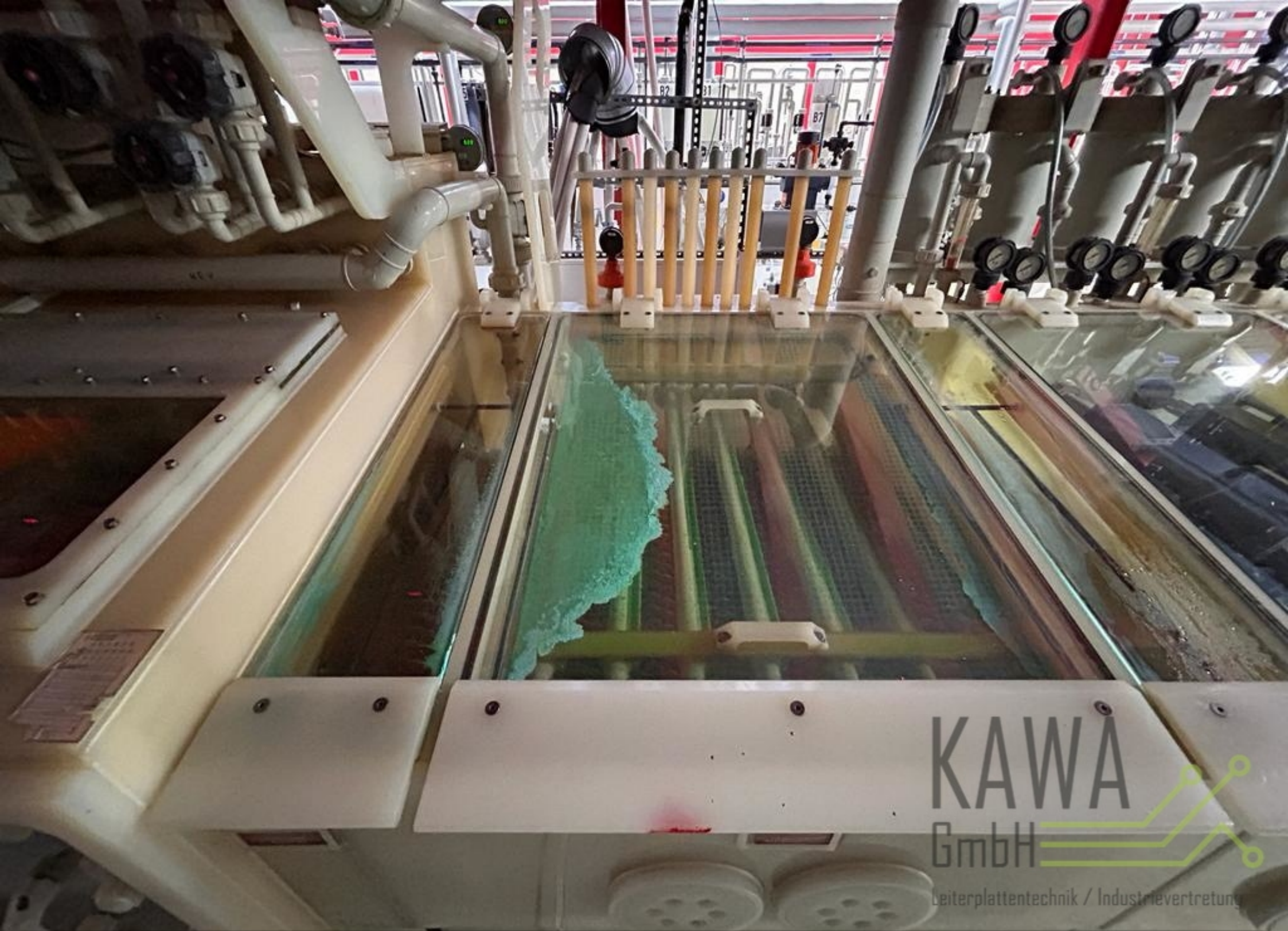


www.kawa.de



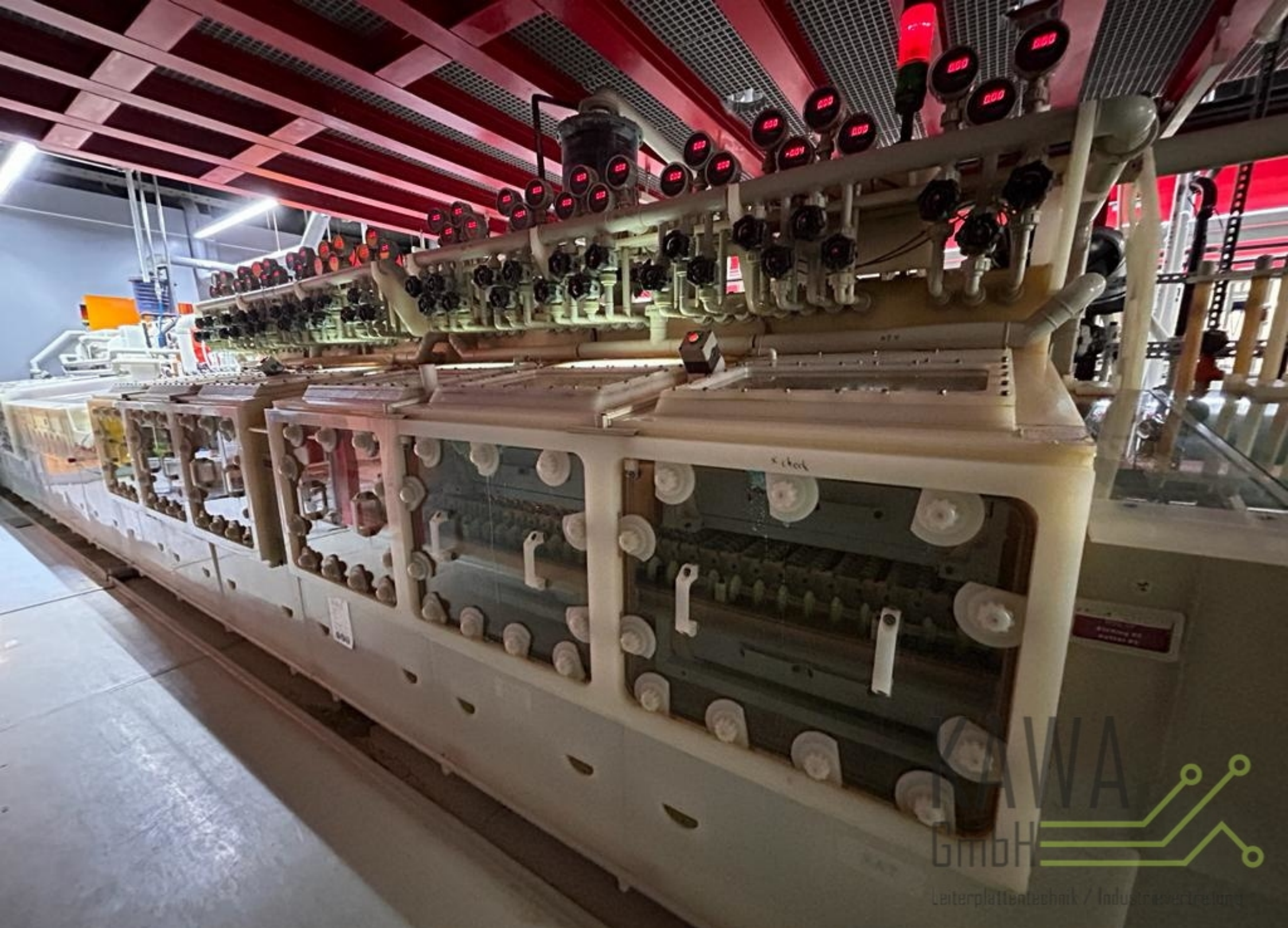
KAWA
GmbH

Leiterplattentechnik / Industrievertretung



KAWA
GmbH

Leiterplattentechnik / Industrievertretung





KAWA
GmbH

Legation... Vertretung



Premi
KAWA
GmbH

Leiterplattentechnik / Industrievertretung



KAWA
GmbH

Leiterplattentechnik / Industrievertretung



PLUS
Line

XA37



KAWA
GmbH 

Leiterplattentechnik / Industrievertretung



XAT1.1

000

KAWA
GmbH 
Leiterplattentechnik / Industrievertretung



PremiumLine

KAWA
GmbH

Plattentechnik / Industrievertretung



KAWA
GmbH 
Leiterplattentechnik / Industrievertrieb



POS. 12
Striping #2
Stripper #2

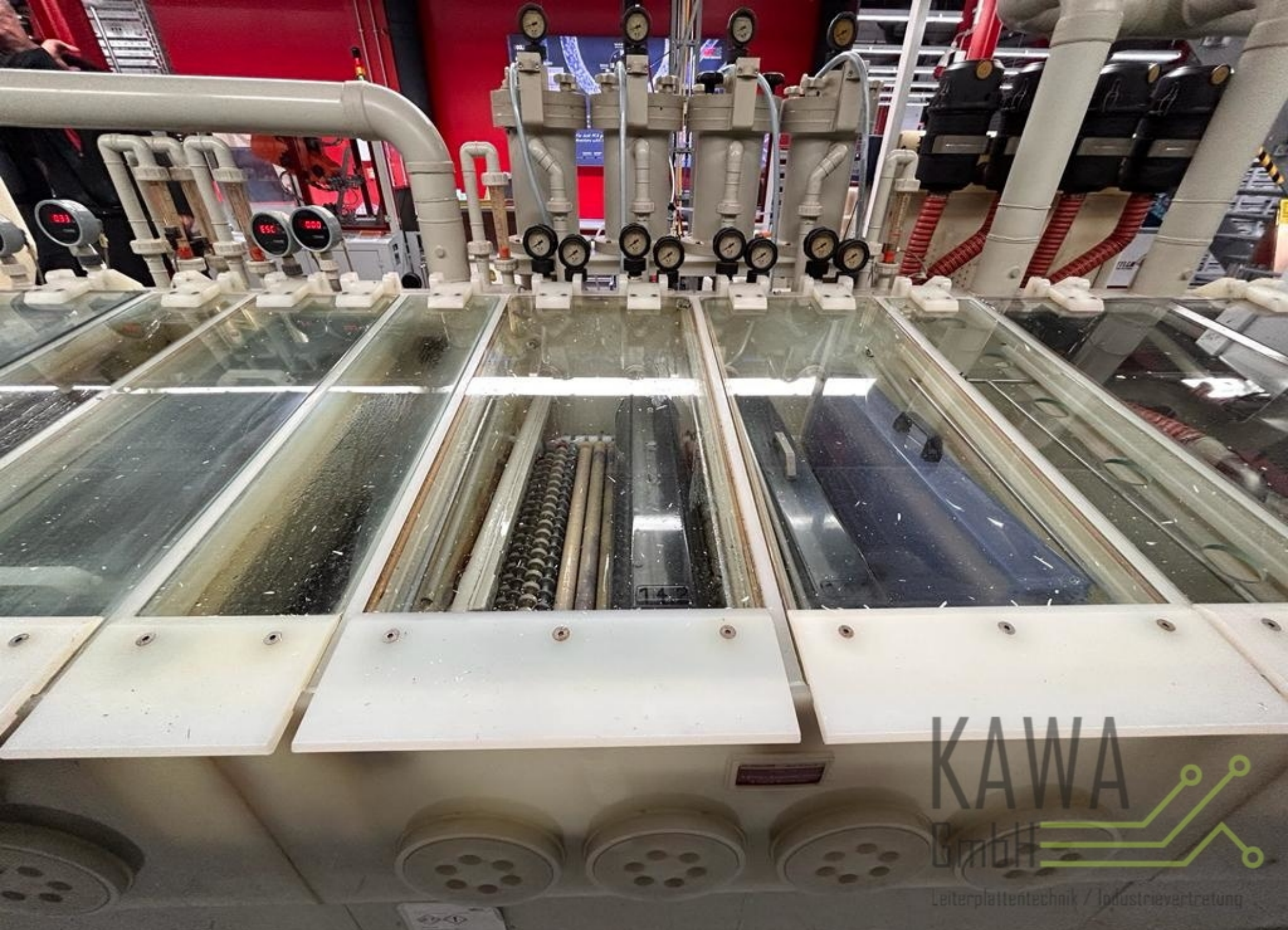
XA12
XA12.1

XA95

KAWA
GmbH 
Leiterplattentechnik / Industrievertretung



KAWA
GmbH
Industrietechnik / Industrievertretung



KAWA
GmbH

Leiterplattentechnik / Industrievertretung



KAWA
GmbH





PL 17
KAWA
AUTOMATION SYSTEM

KAWA
AUTOMATION SYSTEM

KAWA
GmbH

Leiterplattentechnik / Industrievertretung



 **KAWA**
AUTOMATION SYSTEM

KAWA
GmbH 

Leiterplattentechnik / Industrievertretung



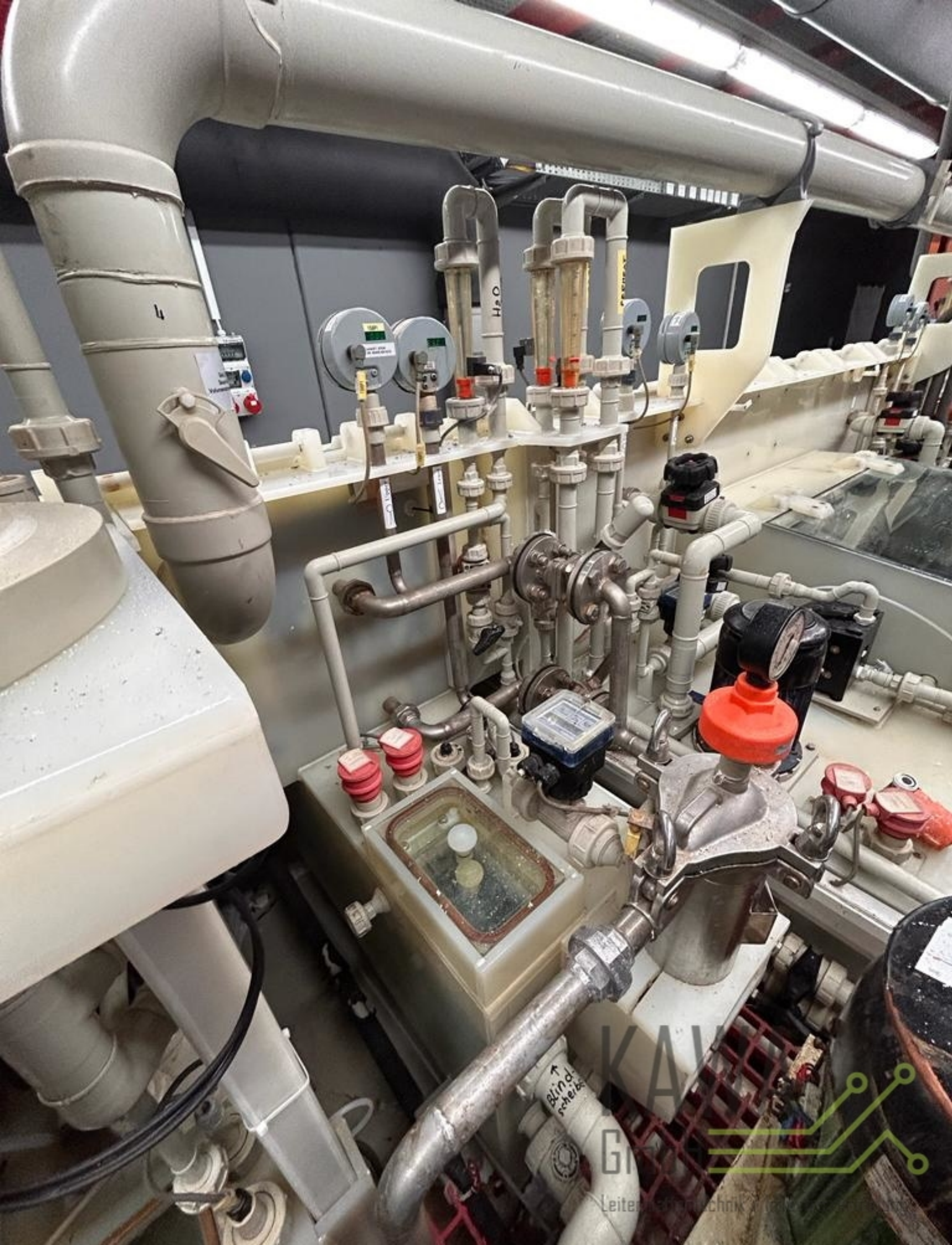






Caution
Sparks

KAWA
GmbH
Leiterplatten- und Industrievertretung

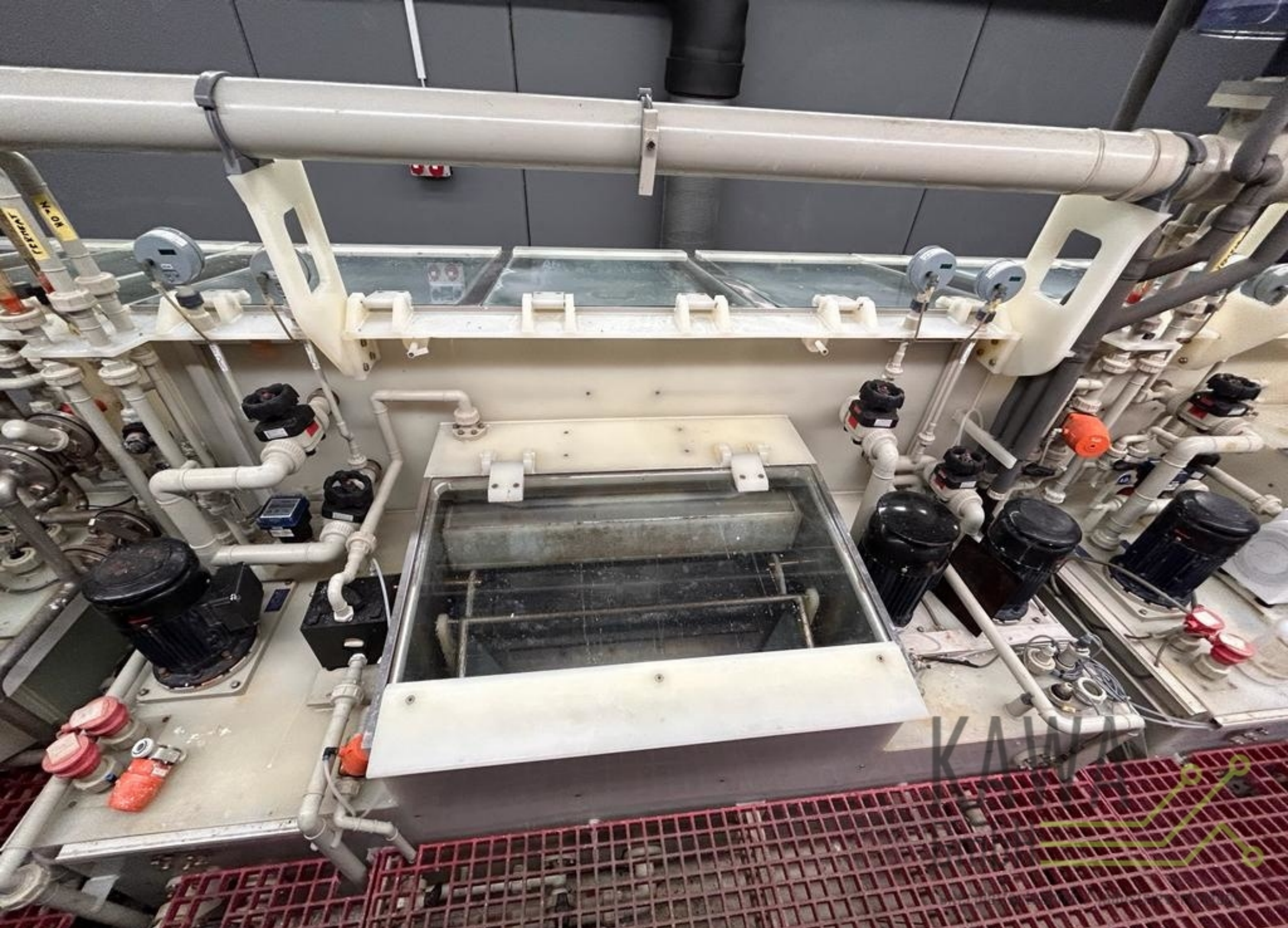


KAV
Gleiter Technik



KAWI
GmbH

Leiterplattentechnik / Industrievertretung



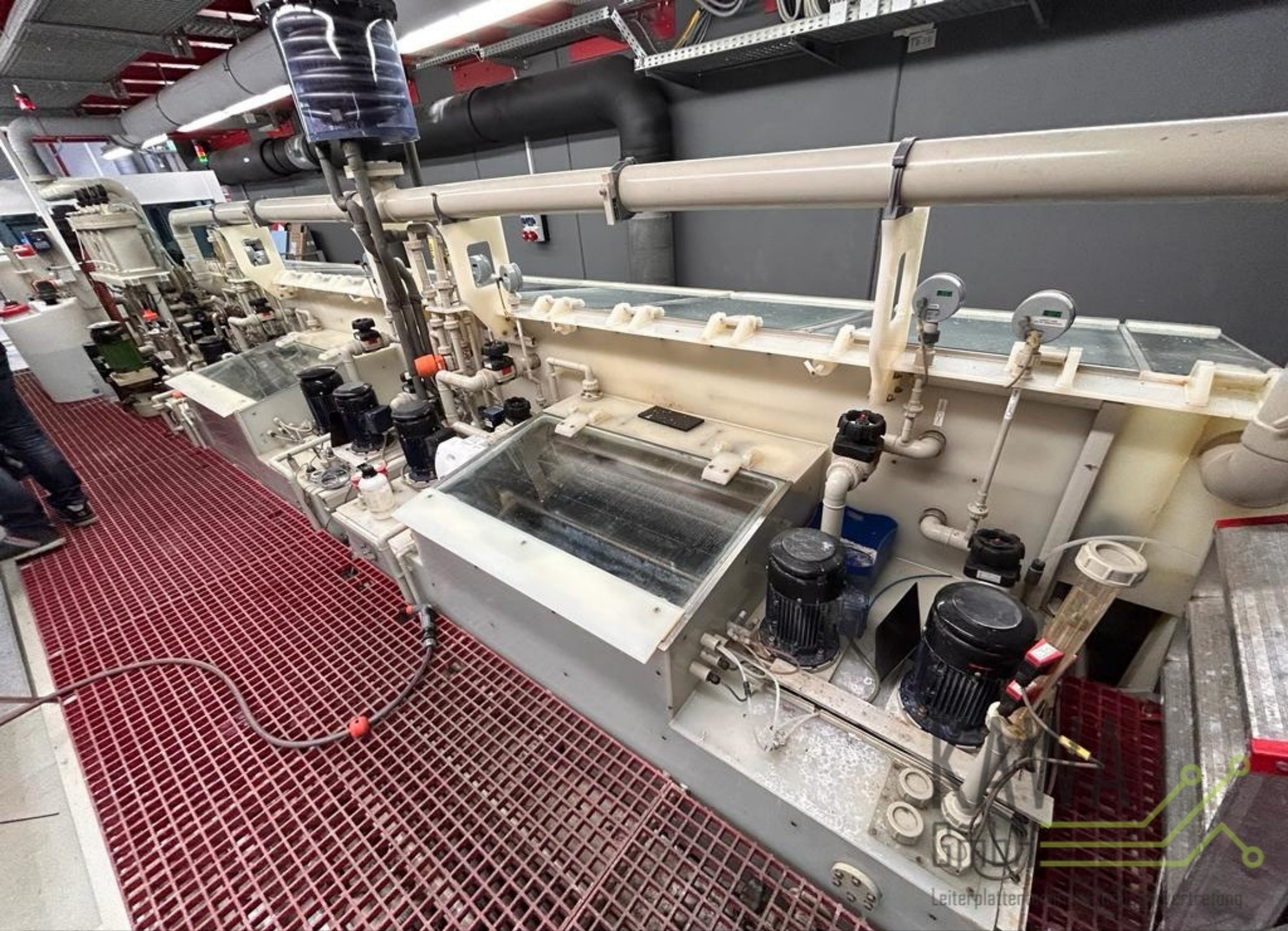




KAWA
GmbH

Leiterplattentechnik / Industrievertretung



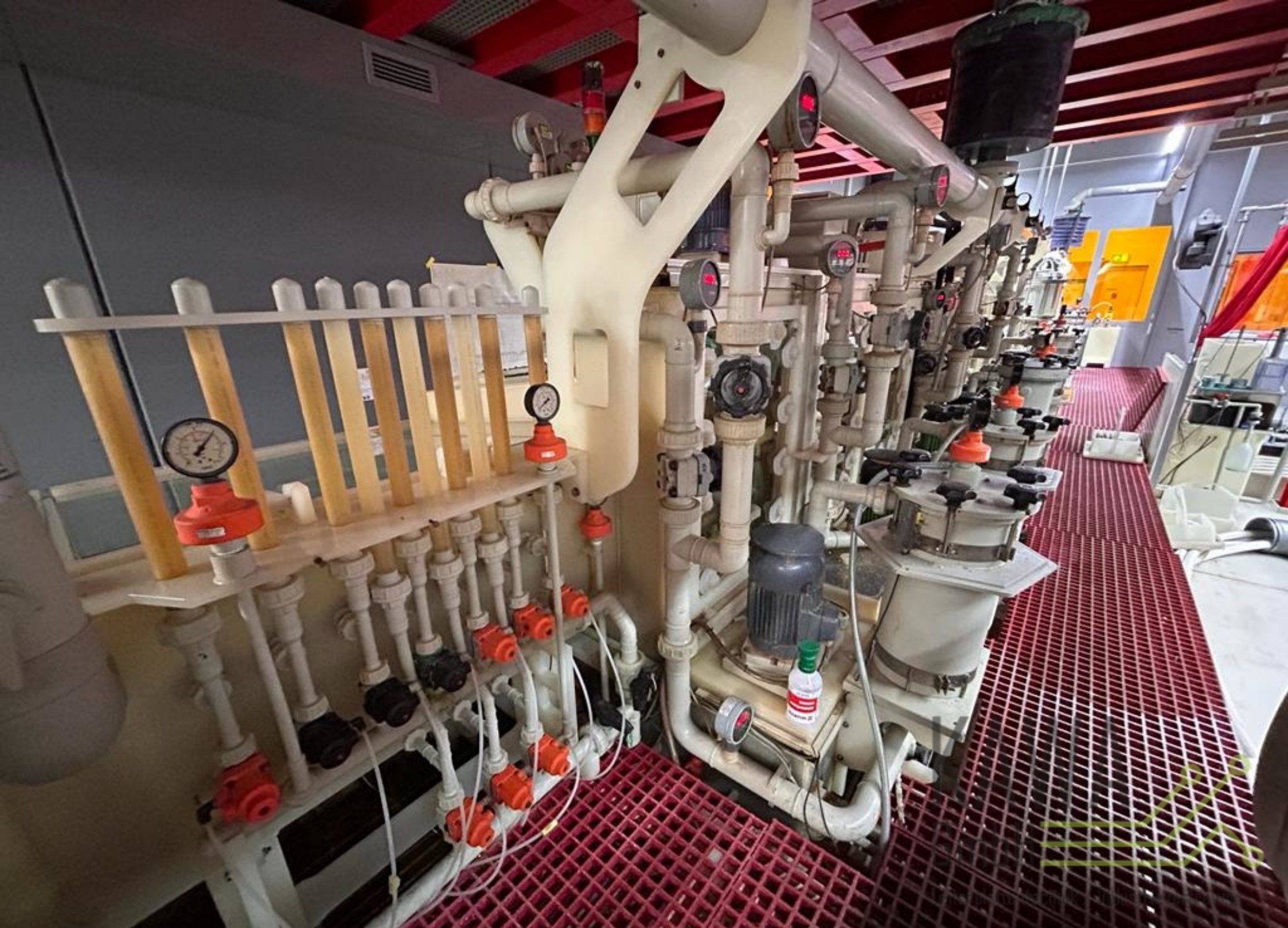




GmbH
Leiterplattentechnik / Industrie

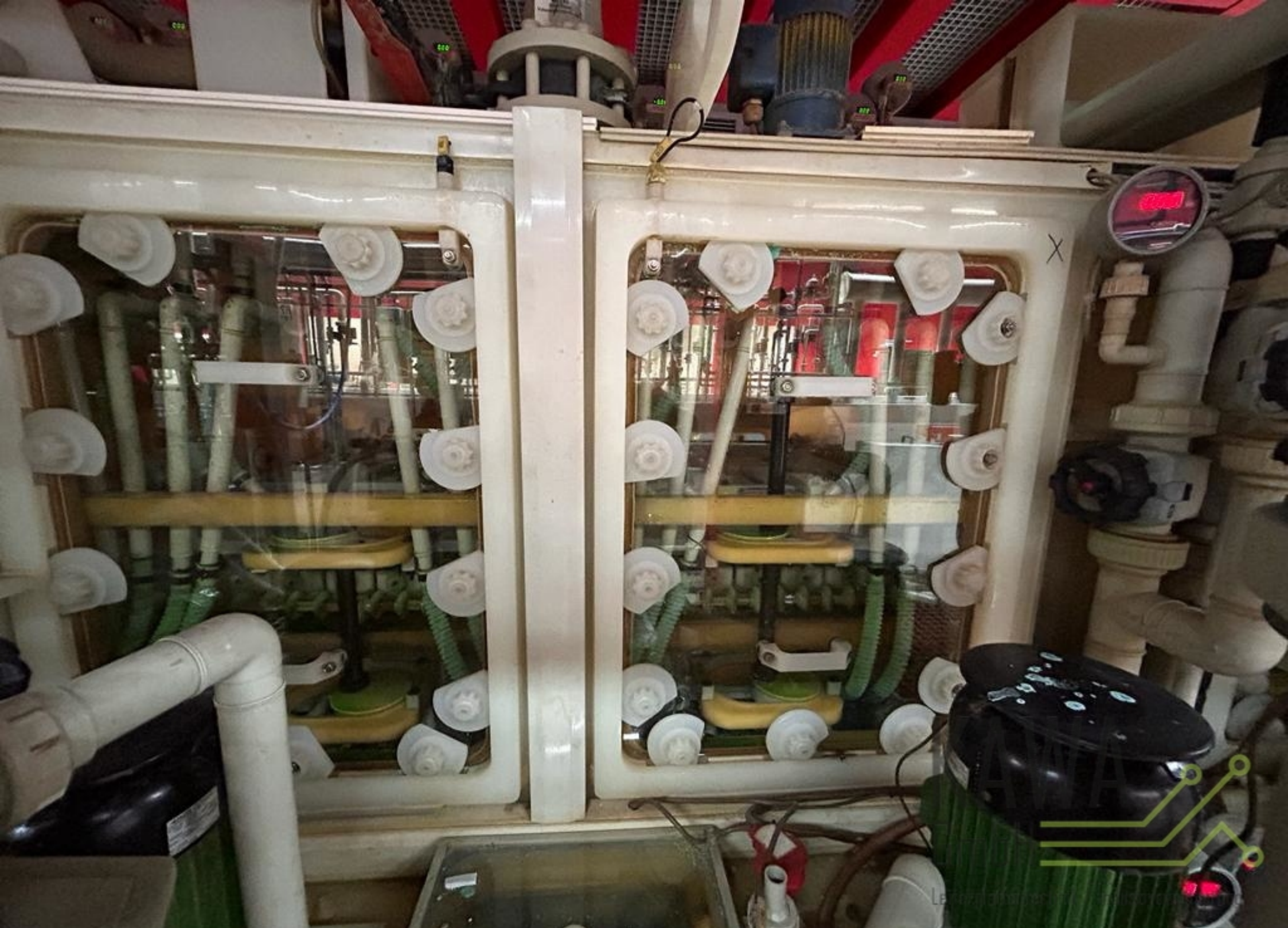


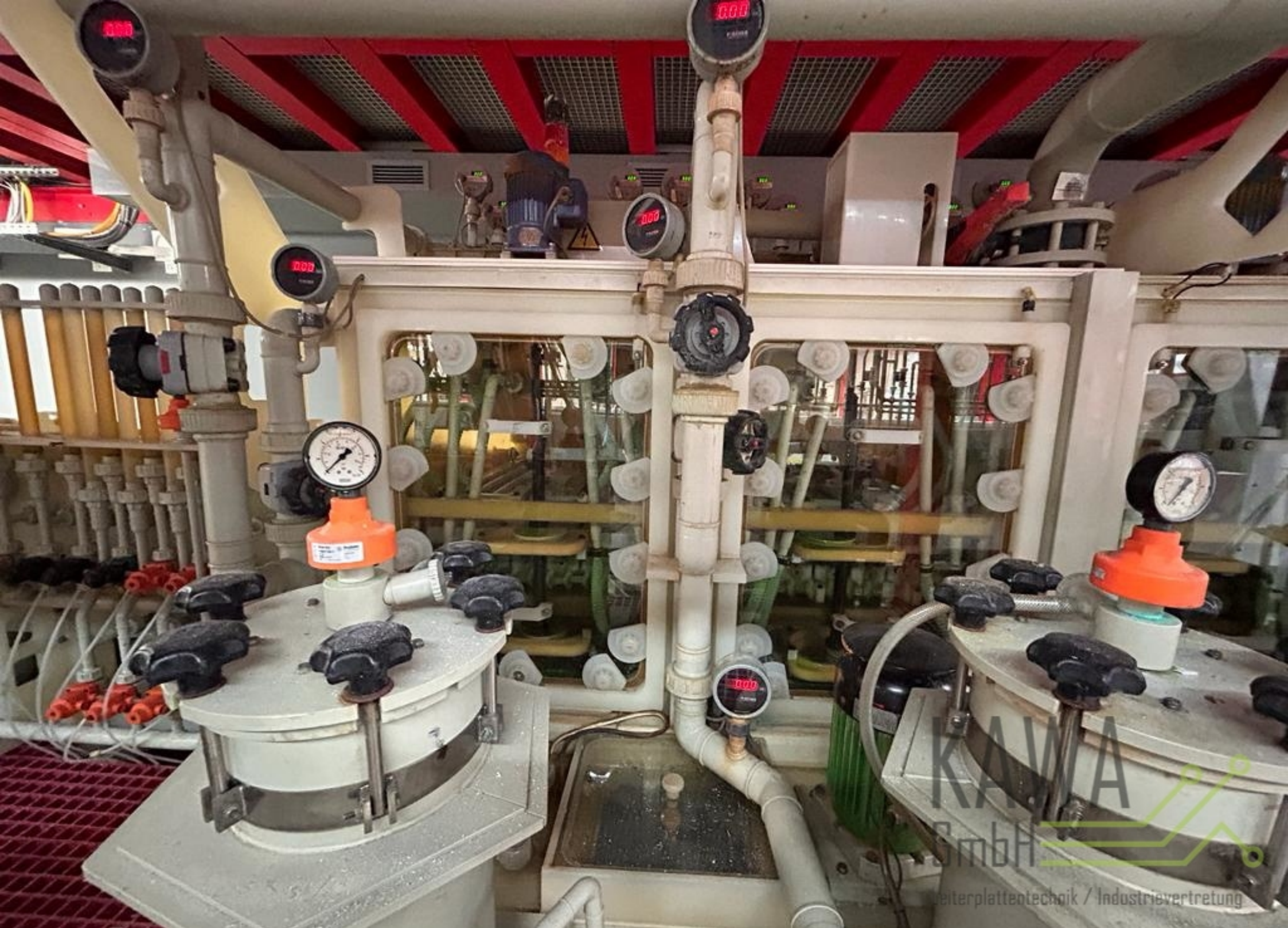






K
GT
Leiter





KAWA
SmbH
weiterplatteentechnik / Industrievertretung



KAWA
HH
Industrievertr



KAWAIO
GmbH

www.kawaiotechnik.de / Industrietechnik



KAWA
GmbH

Leiterplattentechnik / Industrietechnik

S.G 1.263	HCl(M/L) 2.698	H₂O₂ 31.04	TEMP(°C) 39.89
HA <input type="checkbox"/> 1.300	HA <input type="checkbox"/> 3.000	HA <input type="checkbox"/> 75.00	HA <input type="checkbox"/> 45.00
CT <input type="checkbox"/> 1.265	CT <input type="checkbox"/> 2.700	CT <input type="checkbox"/> 25.00	CT <input type="checkbox"/> 39.00
LA <input type="checkbox"/> 1.220	LA <input type="checkbox"/> 2.000	LA <input type="checkbox"/> 11.00	LA <input type="checkbox"/> 34.00
Total pump run time h/ 9 M m/ 27 D	Total pump run time h/ 21 M m/ 84 D	Total pump run time h/ 19 M m/ 61 D	Total input time h/ 305 M m/ 1217 D
SBP/T 5 sht/ 60 S Total sheets 1213 sht/ 404 M	Parameter bank 1		<input type="checkbox"/> Counter mode <input type="checkbox"/> Sensor mode
Information		13 / 12 / 2022 20:28	Reset
Control	Measure	Main	Graph
			Counter
			Sensor
			Z / S
			Advance

JAPAN AQUA CO. LTD

ASC-710





KAWA
GmbH

Leitungsinstitut für Industrievertretung











Caution
Spurt

KA
LIFE
plant



KAWA
GmbH
Leiterplattentechnik Industrie



JUMO AQUIS 500
1.50
▼ ▲
PGM EXIT CAL

JUMO AQUIS 500
TEMPERATURE 11.38
▼ ▲
PGM EXIT CAL

GABMET EPOR
ART.NR. 840A-00-0118
2.2

GABMET EPOR
ART.NR. 840A-00-0118
2.05

KAWA
GmbH
Technik / Industrievertretung





hendor

KAWA
GmbH

Leiterplattentechnik / Industrieverwaltung



GmbH
Leiterplattentechnik / Industrievertretung



UNTERSCHIEDLICHE GEFAHRENKATEGORIEN
Korrosionsmittel
S05+
S06
S10
S12
S13
S14
S15
S16
S17
S18
S19
S20
S21
S22
S23
S24
S25
S26
S27
S28
S29
S30
S31
S32
S33
S34
S35
S36
S37
S38
S39
S40
S41
S42
S43
S44
S45
S46
S47
S48
S49
S50
S51
S52
S53
S54
S55
S56
S57
S58
S59
S60
S61
S62
S63
S64
S65
S66
S67
S68
S69
S70
S71
S72
S73
S74
S75
S76
S77
S78
S79
S80
S81
S82
S83
S84
S85
S86
S87
S88
S89
S90
S91
S92
S93
S94
S95
S96
S97
S98
S99
S100

100% Zehn

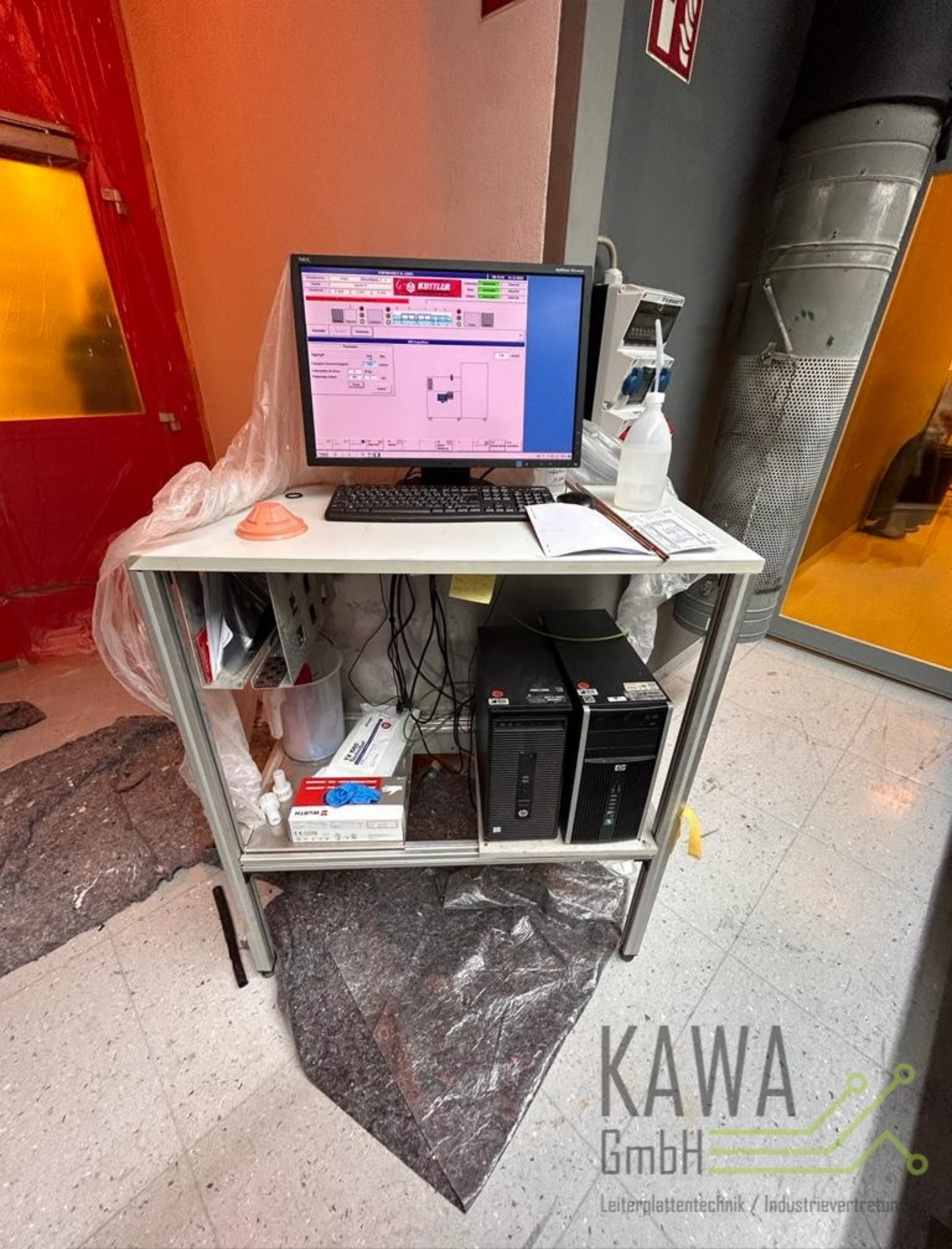


H₂O₂ Zulauf



KAWA
GmbH

Leiterplattentechnik / Industrievertretung



050919



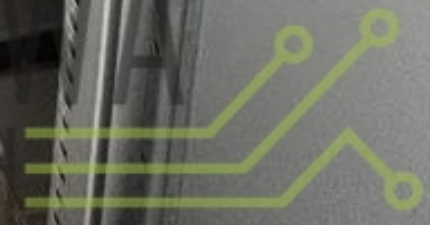


KUTTLER
AUTOMATION SYSTEMS



Thermografisch überprüft ✓

MASCHINEN NR.
10035



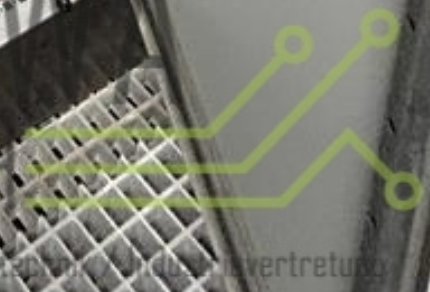


✓

100%

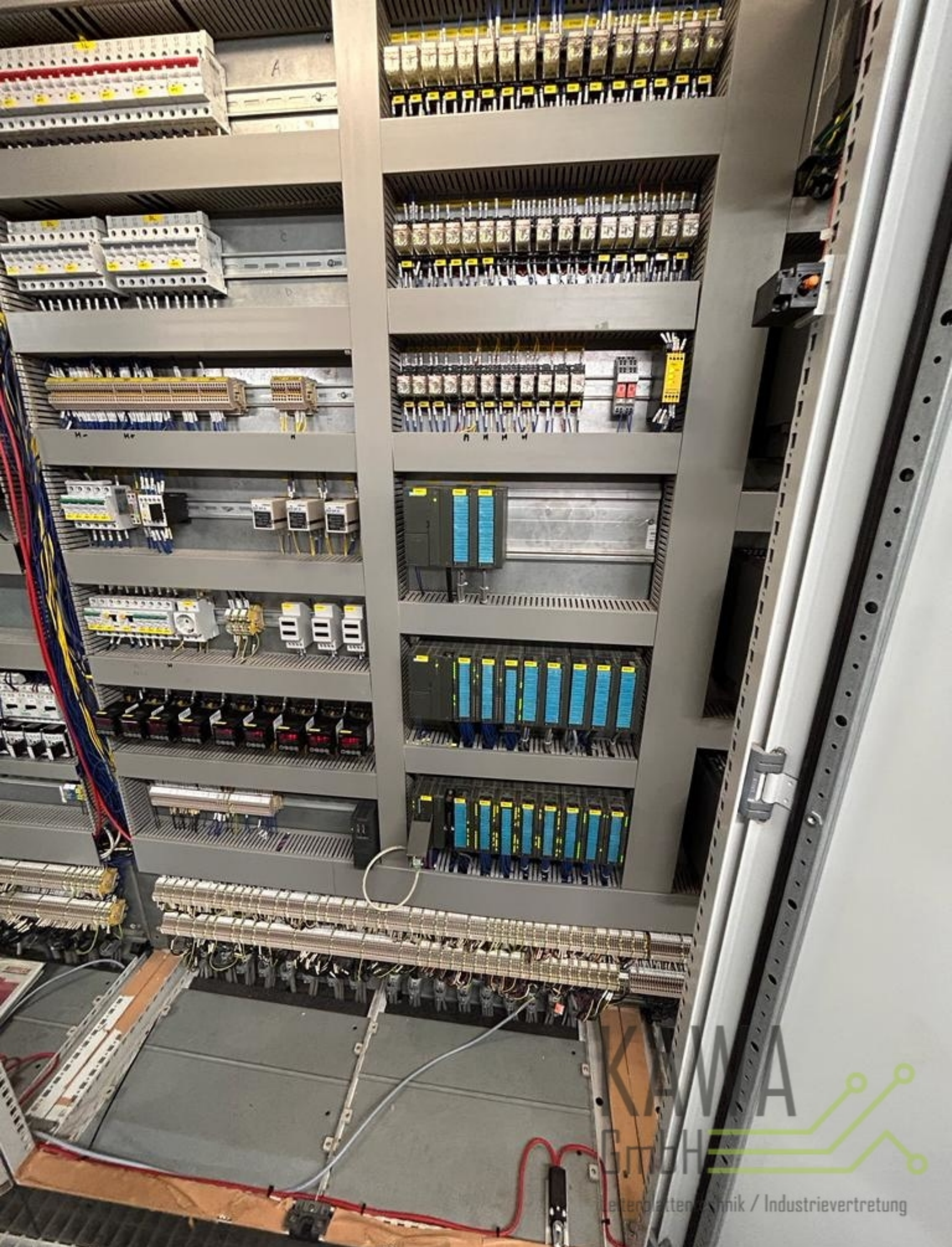
GmbH

Leitertechnik / Industrievertriebs



vertretu







H H H H

70A1 70A2 70A3

70A1 70A2 70A3 70A4 70A5 70A6 70A7 70A8 70A9

70A1 70A2 70A3 70A4 70A5 70A6 70A7 70A8 70A9

KAWA

69A1 SF IM361 IM-R DC 5V SIMATIC S7-300 1

69A2 2

69A3 3

Slot	Terminal	Label
69A2	0	Q32.0 Q34.0
	1	Q32.1 Q34.1
	2	Q32.2 Q34.2
	3	Q32.3 Q34.3
	4	Q32.4 Q34.4
	5	Q32.5 Q34.5
	6	Q32.6 Q34.6
	7	Q32.7 Q34.7
69A3	0	Q36.0 Q38.0
	1	Q36.1 Q38.1
	2	Q36.2 Q38.2
	3	Q36.3 Q38.3
	4	Q36.4 Q38.4
	5	Q36.5 Q38.5
	6	Q36.6 Q38.6
	7	Q36.7 Q38.7
69A2	0	Q33.0 Q35.0
	1	Q33.1 Q35.1
	2	Q33.2 Q35.2
	3	Q33.3 Q35.3
	4	Q33.4 Q35.4
	5	Q33.5 Q35.5
	6	Q33.6 Q35.6
	7	Q33.7 Q35.7
69A3	0	Q37.0 Q39.0
	1	Q37.1 Q39.1
	2	Q37.2 Q39.2
	3	Q37.3 Q39.3
	4	Q37.4 Q39.4
	5	Q37.5 Q39.5
	6	Q37.6 Q39.6
	7	Q37.7 Q39.7





BN1

SIEMENS

Attention! For 80% motor selection see Getting Started Guide - Motor Frequency

MICROMASTER 420

WARNING! DANGEROUS VOLTAGE DISCHARGE TIME 5 MIN. **CAUTION!** SEVERAL MINUTE SHUTDOWN ENLARGED 5 MIN.

Yellow warning label with safety instructions.

BN2

SIEMENS

Attention! For 80% motor selection see Getting Started Guide - Motor Frequency

MICROMASTER 420

WARNING! DANGEROUS VOLTAGE DISCHARGE TIME 5 MIN. **CAUTION!** SEVERAL MINUTE SHUTDOWN ENLARGED 5 MIN.

Yellow warning label with safety instructions.

BN1

SIEMENS

Attention! For 80% motor selection see Getting Started Guide - Motor Frequency

MICROMASTER 420

WARNING! DANGEROUS VOLTAGE DISCHARGE TIME 5 MIN. **CAUTION!** SEVERAL MINUTE SHUTDOWN ENLARGED 5 MIN.

Yellow warning label with safety instructions.

BN2

SIEMENS

Attention! For 80% motor selection see Getting Started Guide - Motor Frequency

MICROMASTER 420

WARNING! DANGEROUS VOLTAGE DISCHARGE TIME 5 MIN. **CAUTION!** SEVERAL MINUTE SHUTDOWN ENLARGED 5 MIN.

Yellow warning label with safety instructions.

1BN1

SIEMENS

Attention! For 80% motor selection see Getting Started Guide - Motor Frequency

MICROMASTER 420

WARNING! DANGEROUS VOLTAGE DISCHARGE TIME 5 MIN. **CAUTION!** SEVERAL MINUTE SHUTDOWN ENLARGED 5 MIN.

Yellow warning label with safety instructions.

1BN1

SIEMENS

Attention! For 80% motor selection see Getting Started Guide - Motor Frequency

MICROMASTER 440

WARNING! DANGEROUS VOLTAGE DISCHARGE TIME 5 MIN. **CAUTION!** SEVERAL MINUTE SHUTDOWN ENLARGED 5 MIN.

Yellow warning label with safety instructions.

1BN2

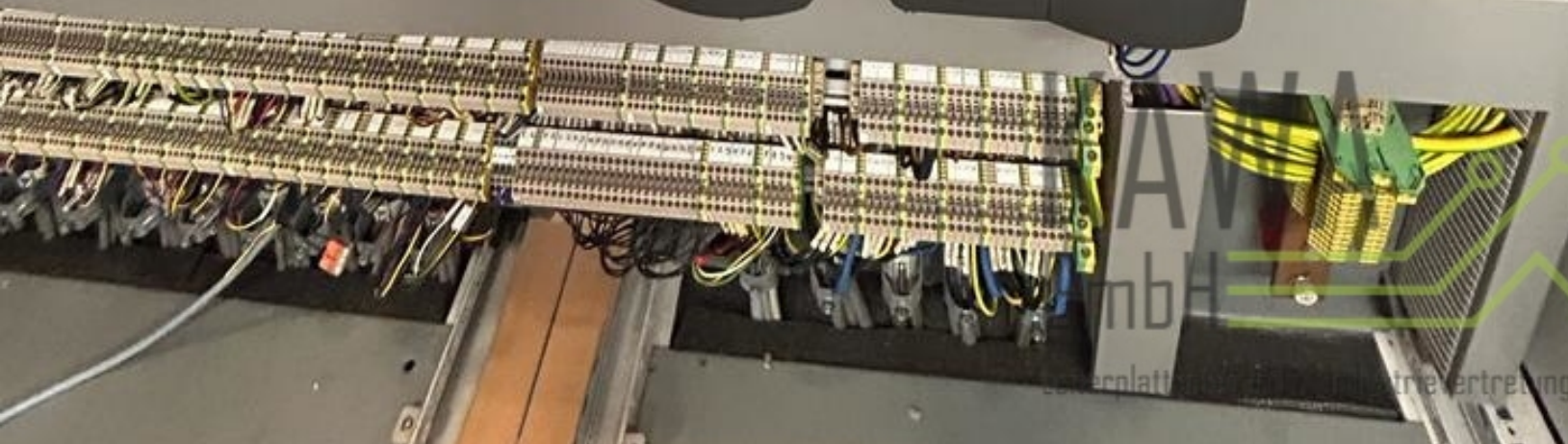
SIEMENS

Attention! For 80% motor selection see Getting Started Guide - Motor Frequency

MICROMASTER 440

WARNING! DANGEROUS VOLTAGE DISCHARGE TIME 5 MIN. **CAUTION!** SEVERAL MINUTE SHUTDOWN ENLARGED 5 MIN.

Yellow warning label with safety instructions.





KUTLER
AUTOMATEN SYSTEME

380
V

KA
GmbH

Leiterplattentechnik / Industrievertretung

KUTTLER
AUTOMATION SYSTEMS



WARNING

