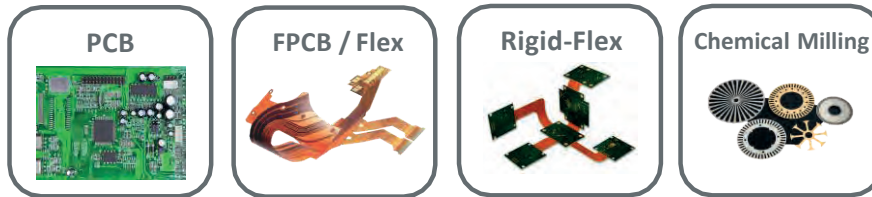




ADVANCED DIRECT IMAGING by ALTIX

ADIX SA



ALDS-Power4+™
High Power LEDs
High Resolution DMD



4 LEDs wavelengths per Photo Head

Higher Precision
Reliability
Flexibility

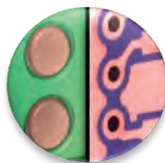
Unique Solution for All Direct Imaging Applications

Resolution



Down to
10µm | 0.4 mil

Registration



±8µm | ±0.3mil
Image to Panel

High
Throughput



≥ 5100 prints / day

High Savings



-80%
Cost of ownership

ADIX SA for All Imaging Needs



Enhanced 4 LEDs Photo Heads for Higher Productivity and Printing Quality

High Accuracy Registration

Print on All Types of Photoresists & Soldermasks

Lower Cost of Ownership

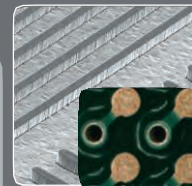
Fully Intuitive & Friendly HMI

From 1 to 6 ALDS-Power4+™ Photo Heads - Upgradable on site

ADIX SA Specifications

APPLICATIONS	PCB • FPCB / Flex • Photo Chemical Milling • IC Substrate • Touch Panel		
Process	Inner Layer • Outer Layer • Soldermask (PSR) Conventional & DI/LDI Specific Dry Film, Ink & Solder Resists From 10 to		
Imaging Resist Materials	1,250mJ/cm ² and above		
Resist Sensitivity	From 228 x 254mm up to 610 x 762mm • From 9"x10" up to 24"x30"		
Exposure Area	Panel Thickness 0,04 to 6mm • 1,6 to 236mils		
RESOLUTION – L/S	10/10µm • 0.4/0.4 mil ⁽¹⁾	20/20µm • 0.8/0.8 mil ⁽¹⁾	
RESOLUTION – DAM	NA 25µm (1mil)		
Edge Roughness	±0,5µm	± 1,5µm	
Depth of Focus	100µm	200µm	
Light Engine	ALDS-Power4+™		
Imaging Heads	From 1 to 6 Heads – Upgradable on site		
Autofocus	±8mm	±315mils	
Exposure Spectrum	4 LEDs wavelengths per Photo Head		
ALIGNMENT	±8µm • ±12µm	±0.3mil (Image to Panel Registration) • ±0.5mil (Side to Side Registration)	
CCD Cameras	2 Cameras - for Outer Layers (Alignment on 4 Holes) - for Soldermask Registration (Alignment on 4 Copper Targets) 3 Cameras for Inner Layers (Alignment on 3 Fiducials)		
Method	Real Time Scaling & Partitioning with all kinds of fiducials		
THROUGHPUT			
Exposure Time	14s with 30mJ/cm ² resist for 457 x 610mm (18" x 24") image size and with 6 Heads ⁽²⁾		
ALDS-Power4™	Data preprocessing in hidden time + High UV Power with 4 LEDs per Photo Head		
SOFTWARE	ALTIX Direct Imaging Suite™ with 22" touch screen		
Data Input	Extended Gerber, ODB++ (option) - Others upon request		
Languages	English, Simplified & Traditional Chinese, Korean, German, French...		
HIGH YIELD			
Air Cleanliness	Hepa Filter Class 100		
Features	Stainless Steel (Frames & Covers)		
GENERAL UTILITIES			
Power Supply	220/400/480V	3 Phases	50/60Hz
Power Consumption	4kW		
Air Supply	6 bars 1.5m ³ /min		
Water Supply	Water pressure 3–5 bars	Flow rate: 23l/min @ 12°C or 33l/min @ 14°C	
Machine Weight	3,500kg	7,716lbs	
Dimensions	2,870mm (L) x 1,750mm (W) x 1,870mm (H) • 113" (L) x 69" (W) x 74" (H)		

(1) depending on photoresist, surface preparation & DES process • (2) estimated time given as reference but can fluctuate according to the process adjustments



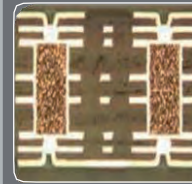
Higher Resolution: 10µm L/S(*)
Use multi-wavelengths UV-LED for best resolution and higher polymerization efficiency on all types of conventional dry film, ink or solder resists

(*) Depend on Photo Head Type

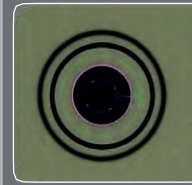


Highest Imaging Quality with ALDS™
Imaging on double or triple dry film laminated layers

Excellent and sharp edges



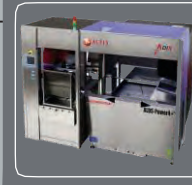
Higher Registration: ±8µm
Real time scaling and partitioning to reach the highest local registration for very demanding application



Side to Side Registration: ±12µm
Highest side-to-side registration on all area of the panels thanks to its unique way of registration

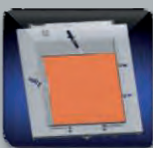


Higher Productivity
4 UV LED wavelengths for the highest efficiency printing



Smart Automation
Fully automated systems and customized solutions for high mix, small, medium & mass production

Unique Features



Unique Panel Holding
Fully automated bar clamping system & vacuum table for holding all panels thicknesses and counteract warp & twist



Highest Image Quality
±8mm high dynamic autofocus and up to ±200µm depth of focus to overcome uneven topography surfaces



Manufacturing, Sales & Service:
Altix France – HQ
Email: central@altix.fr
Email: kawa@kawa-gmbh.com



Leiterplattentechnik / Industrievertretung

Imaging with us!



www.altix.fr

www.kawa-gmbh.com