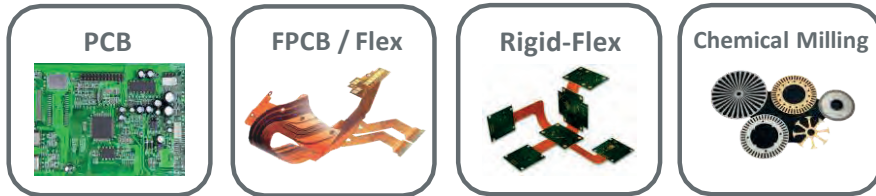


NEW



ADVANCED DIRECT IMAGING by ALTIX

The All New Adix SA^{neo}



Faster & Smarter

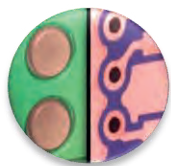
Faster Imaging with Customized Number of Photo Heads & Stripes

Resolution



Down to
30µm | 1.2 mil

Registration



±8µm | ±0.3mil
Image to Panel

High Throughput



≥ 6600 prints/day

Auto Job Loader



Time Saving



ADIX SA neo for All Imaging Needs



- Enhanced 4 LEDs Photo Heads | High resolution DMD
- Fast Imaging Speed with Wider Stripes
- Enlarged Optics for High UV Light Power & Depth of Focus
- Intuitive & Friendly HMI
- Low Cost of Ownership

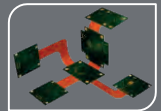
Faster & Smarter

From 1 to 7 Photo Heads - Upgradable on site

ADIX SAneo Specifications

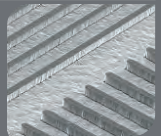
Applications

PCB, FPBC/ FLEX, PCM, IC Substrate, Touch Panel
From 228 x 254 mm up to 610 x 762 mm | From 9"x10" up to 24"x30"



Resolution

High Resolution: 30µm | 1.2mil
SRO: Min 75 µm
Min Dam size: 50 µm



Registration

±8µm | ±0.3mil (Image to Panel Registration)
±12µm | ±0.5mil (Side to Side Registration)



Throughput

With 5 Heads : 120 sides/hour with 30mJ/cm2 resist for 457 x 610mm (18"x 24")
Data preprocessing in hidden time + High UV Power with 4 LEDs per Photo Head

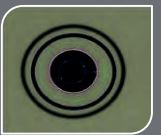


Smart Features

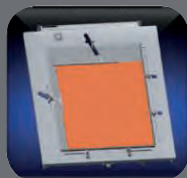
ADIX Tools: Offline machine set-up and job preparation – Reduce operator mistakes

Smart Automation: Multiple jobs management | Direct & easy machine access for SA mode

Advanced Vision Software: High accuracy and reliable target detection | Missing or damaged target management



Unique Features



Unique Panel Holding

Fully automated bar clamping system & vacuum table for holding all panels thicknesses to counteract warp & twist



Highest Image Quality

±8mm high dynamic autofocus and up to ±150µm depth of focus to overcome uneven topography surfaces



Manufacturing, Sales & Service:

Altix France – HQ

Email: central@altix.fr

Email: kawa@kawa-gmbh.com



Leiterplattentechnik / Industrievertretung

Imaging with us!



www.altix.fr

www.kawa-gmbh.com