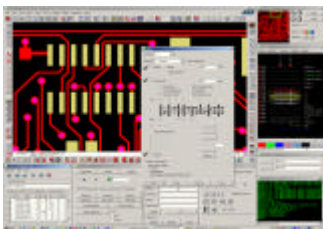


# Speedy 588



- **High Performance X-Y motors**
- **New Z probe design**
- **New probe servo controller**
- **Test Speed up to 50% increased!**



**Integrated  
Data Preparation**

## Experience the new speed!

### High performance X-Y motors

New X-Y motors give the 588 an increase in speed, optimizing probe displacement on the board.

### New Z probe design

The sophisticated new Z probe carriage has a mass of 10.5 grams compared to the 83 grams of the old design. This is 12% of the old probe mass. This is a great improvement in acceleration

### Improved probe servo controller

Improved servo-control on the 588 acts to keep pad marking despite increased acceleration and speed with the same accuracy.

### Stretching Frame

For testing thin core, flex and inner layers

### Quick Frame

Improves productivity by allowing rigid boards to be changed very quickly. It is also a perfect solution for mounting multiple boards in a frame.

### Stamping unit (option)

The optional stamping unit allows the marking of good boards after test.

### SmartSpeedy (option)

Integrated Data Preparation, using world-class netlist and test point generation algorithms from the highly proven Ucam SmartSuite family.

### FaultStation3 (option)

Pinpoint faults offline and repair them with the aid of this highly productive and intuitive software solution.

## Speedy 588

## Technical Data

Technical Specifications		
Probe heads	2 + 2	
Probe load	(adjustable & servo controlled)	
Max. Board size	26.4" x 19.7"	670 x 500 mm
Min. board size in x/y	0 / 0.98"	0 / 25 mm
Board loading	Stretching frame & Quick frame.	
Board setup for test	Single board	Multiple boards
Repeatable accuracy	1.18 mil	30 µm
Resolution x/y	1.18 mil	30 µm
Min. pad pitch	7.88 mil	200 µm
Min. pad size	3.94 mil	100 µm
Test voltage	25 – 500 V (adjustable)	
Test current	30 – 200 mA (adjustable)	
Isolation method	Discharge	
Number of CCD cameras	1 + 1 (for alignment support)	
Software data preparation	SmartSpeedy	
Auto-loader	–	
Air requirements	6 bar	
Weight	397 lbs	180 kg
Room temperature during operation	50° – 86° F	10° – 30° C
Test rate (test points per minute)	Up to 2000	
Thin core test	Yes	
Mania Test floor integration	Yes	