

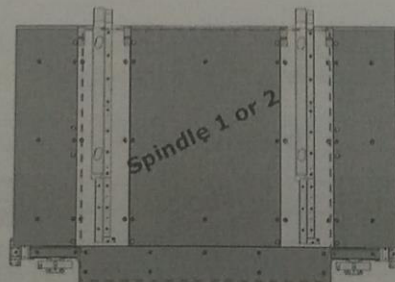
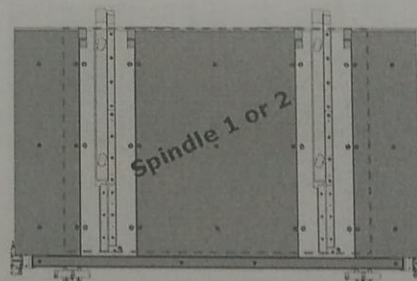
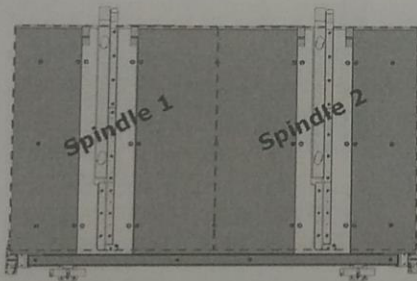
3.8 SPECIFICATIONS OF WORKING AREA

CONFIGURATION	DRILLING	ROUTING	WORKING AREA
DRILL	Yes		2 x 635 x 762 mm (2 x 25" x 30") 1 x 762 x 1050 mm * (1 x 30" x 41.34") 1 x 915 x 915 mm ** (1 x 36.02" x 36.02")
COMBO	Yes	Yes	1 x 762 x 1050 mm (1 x 30" x 41.34") 1 x 915 x 915 mm ** (1 x 36.02" x 36.02")
ROUT		Yes	2 x 635 x 762 mm (2 x 25" x 30") 1 x 762 x 1050 mm * (1 x 30" x 41.34") 1 x 915 x 915 mm ** (1 x 36.02" x 36.02")
COMBO BKP 1	Yes	Yes	1 x 762 x 1400 mm (1 x 30" x 55.12")
COMBO BKP 2			1 x 745 x 986 mm (1 x 29,33" x 38,82")

Remark: Drilling of one panel with 2 spindles at the same time is not available yet

* Soft tooling is needed

** Option soft tooling is needed



**3.10 BOARDS STACK SPECIFICATIONS
(FOR AUTOMATIC LOADING/UNLOADING)**

WIDTH (L1) : 250 < L1 < 635 mm (9,842" < L1 < 25")
 LENGHT (L2) : 300 < L2 < 770 mm (11,811" < L1 < 30,31")

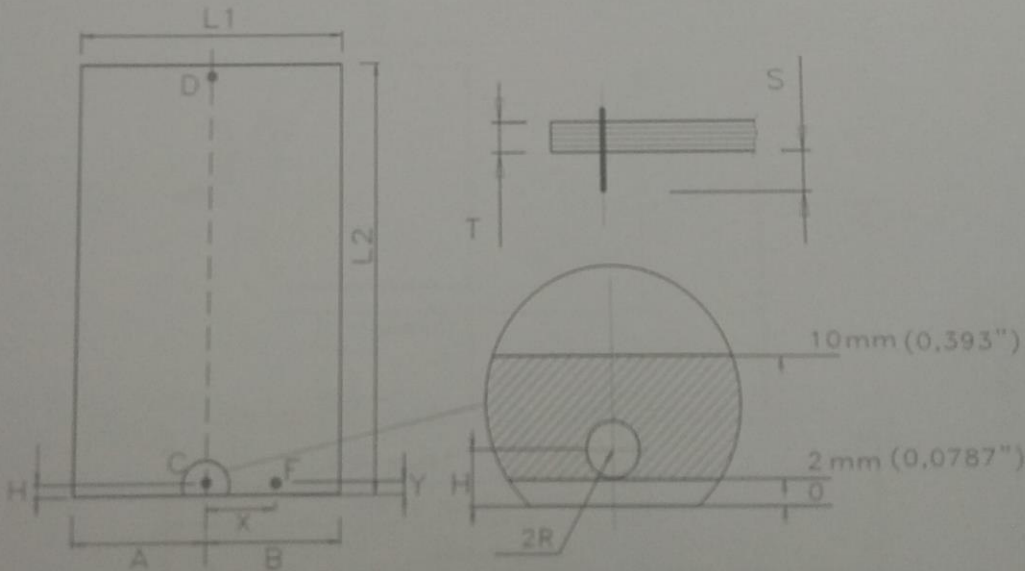
PINS POSITION (A , B): 25 < (A or B) < 315 mm
 4,921" < (A or B) < 12,401")

STACKS THICKNESS (T) : 10 mm (0,393") max

PIN BOTTOM PROTUSION (S) : 9 < S < 12 mm (0,354" < S < 0,472")

PIN CENTRE TO EDGE DISTANCE (H)
 (BOTH C AND D): $R+2 < H < 10-R$ mm (R=PIN RADIUS)
 $R+0,078" < H < 0,393"-R$
 C and D pins position must be inside the area limited by two parallel lines which have a distance of 2 and 10 mm from the panel edge.

ANTIROTATION HOLE (F) : Position:
 (only for multilayer panel) X = 105 mm (± 0.25 mm)
 X = 4,133" (± 0.0098")
 Y = on same axis as the pin (± 0.25 mm)
 Y = on same axis as the pin (± 0.0098")
 Hole diameter = 3 mm (0.118") min



2.3 OVERALL DIMENSIONS

2.3.1 MANUAL LOADING/UNLOADING

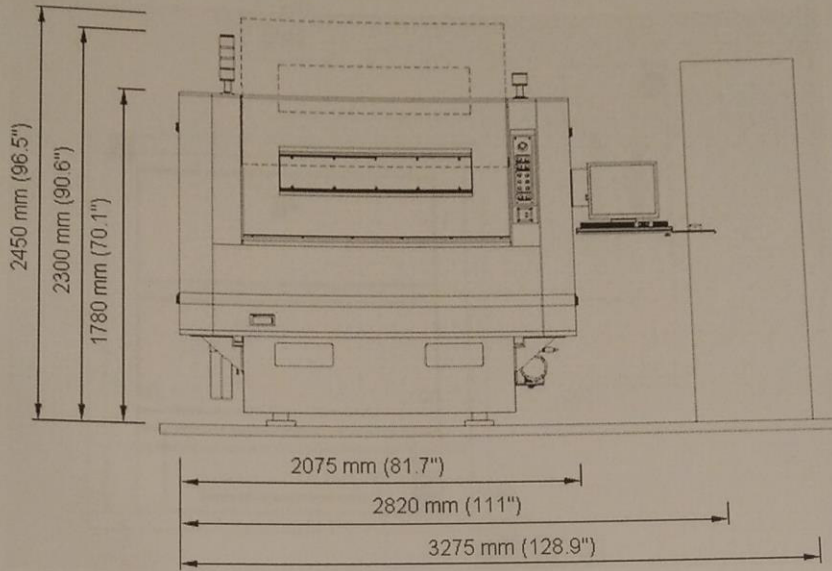


Fig. 2.5 Front View

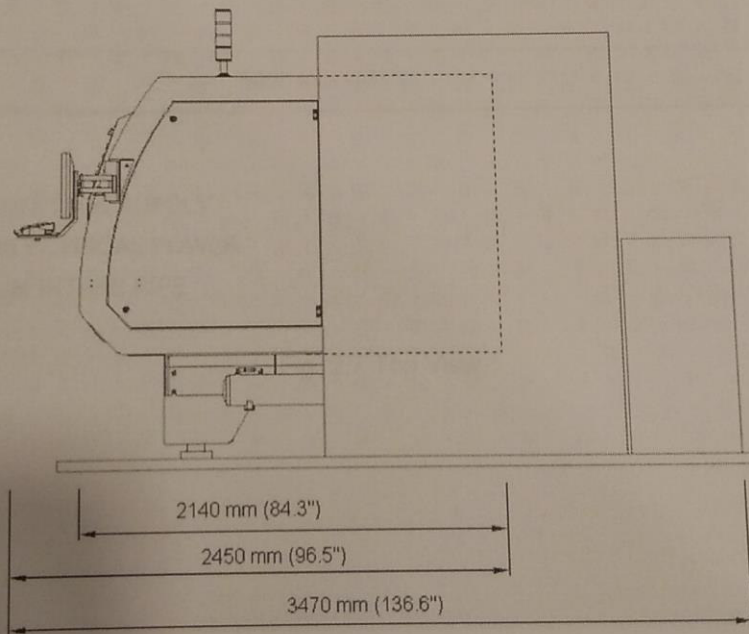


Fig. 2.6 Side View