



Module D → UNLOADER



- Module made of PP
- Metallic parts made of STAINLESS STEEL

Realized by OCCLEPPO S.R.L. – forbidden distribution and reproduction  
without explicit written authorization

Revision of 10/05/05

**KAWA**  
GmbH

Leiterplattentechnik / Industrievertretung

DICHIARAZIONE DI CONFORMITA' / DECLARATION OF CONFORMITY  
KONFORMITÄTERKLÄRUNG / DECLARATION DE CONFORMITÉ  
DECLARACIÓN DE CONFORMIDAD/ДЕКЛАРАЦИЯ СООТВЕТСТВИЯ



OCCLEPPO S.R.L.

Via Lago 39  
ALICE CASTELLO (VC) ITALY  
Tel. ++39 (0) 16190234 - Fax. ++39 (0) 16190795  
e-mail: foccleppo@occleppo.com - www.occleppo.com



MODELLO / MODEL/МОДЕЛЬ

Acid (CuCl<sub>2</sub>) ETCHING Mod. 650/05/P-30

N° MATRICOLA / SERIAL NUMBER/СЕРИЙНЫЙ НОМЕР

3472/2005

ANNO DI COSTRUZIONE / YEAR OF MANUFACTURE/ГОД

ПРОИЗВОДСТВА

2005

OCCLEPPO S.R.L. DICHIARA sotto la sua esclusiva responsabilità che la macchina a cui la presente dichiarazione si riferisce è conforme alle prescrizioni delle seguenti direttive:

OCCLEPPO S.R.L. DECLARES on its own responsibility that the machine to which the declaration refers, conforms with the prescription at the following directives:

DIRETTIVE

98/37 CEE - 73/23 CEE - 89/336 CEE - 91/263 CEE - 92/31 CEE - 93/68 CEE

DIRECTIVES

98/37 EEC - 73/23 EEC - 89/336 EEC - 91/263 EEC - 92/31 EEC - 93/68 EEC

LUOGO / PLACE/ МЕСТО:

VIA LAGO N. 39 13040 ALICE CASTELLO (VC)

COGNOME - NOME - / SURNAME - NAME

OCCLEPPO FRANCESCO

POSIZIONE / POSITION

PRESIDENT

DATA / DATE

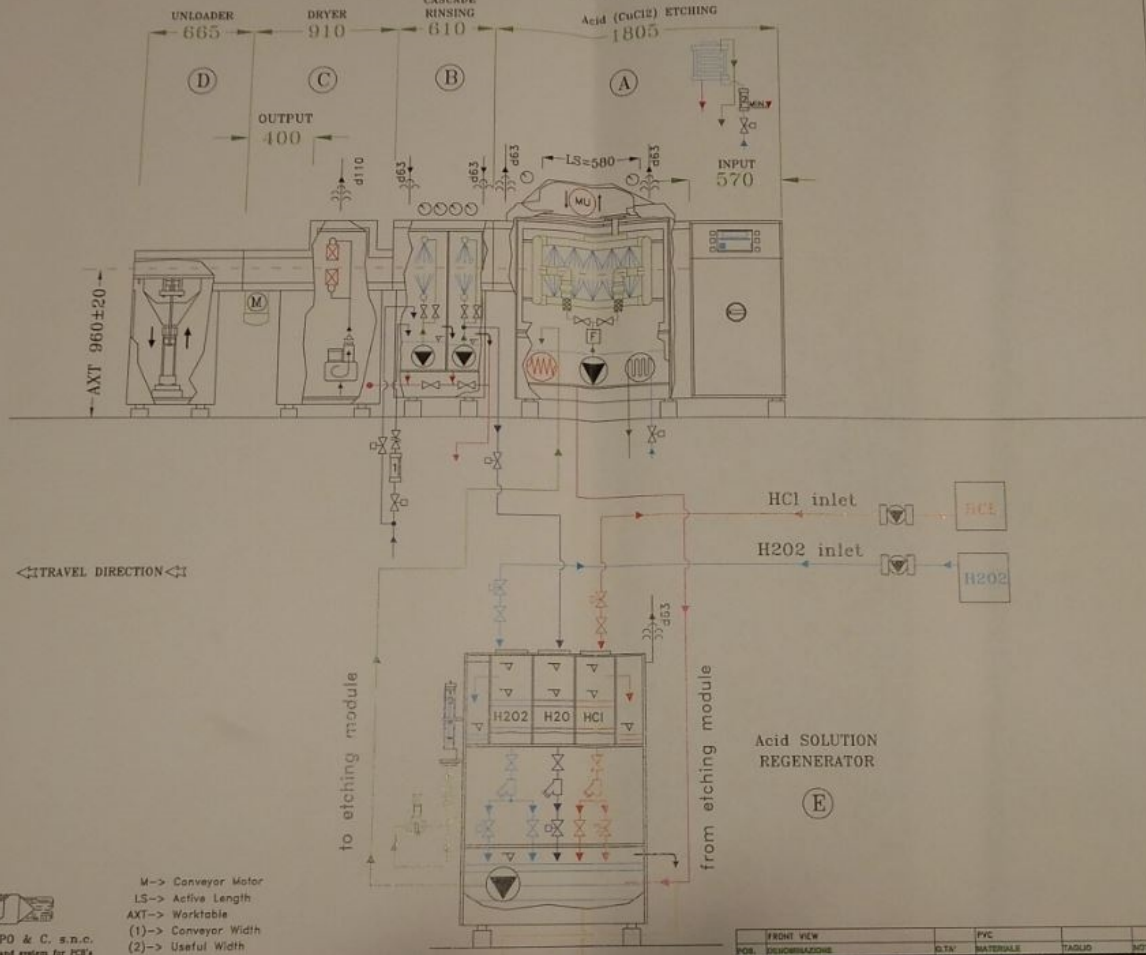
10/06/2005

Firma / Signature

KAWA  
GmbH

Leiterplattentechnik / Industrieautomation

Acid (CuCl<sub>2</sub>) ETCHING Line Mod. 650/05/P-30 (RIGHT to LEFT)



← TRAVEL DIRECTION ←

M → Conveyor Motor  
 LS → Active Length  
 AXT → Worktable  
 (1) → Conveyor Width  
 (2) → Useful Width

OCCLEPPO & C. s.n.c.  
 Machinery and systems for PCB's

Line LENGTH : 3990 mm.



ENTER

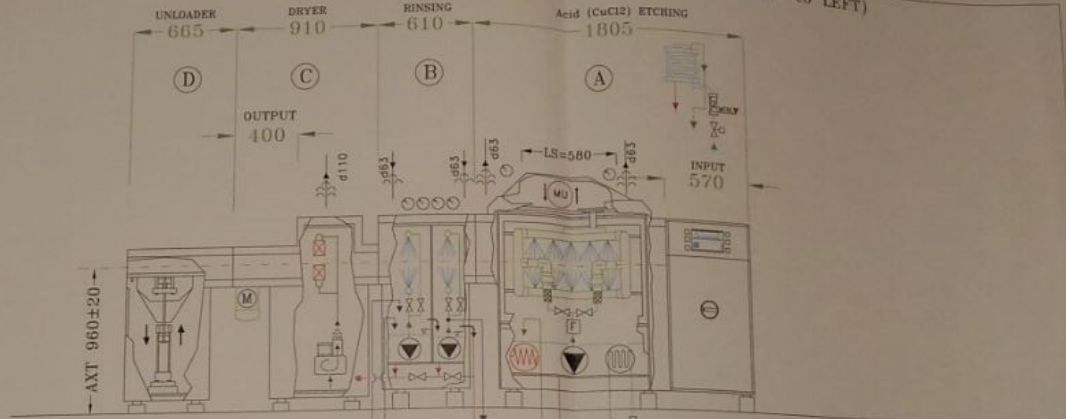
*Handwritten notes on a yellow sticky note, partially illegible.*

**KAWA**  
 GmbH

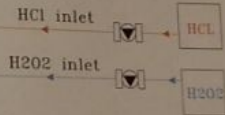
Leiterplattentechnik / Industrievertretung

FRONT VIEW	PVC	NOTE
POS. DISCOMBINAZIONE	ULTA	MATERIALE
<p>Questo disegno è di proprietà della OCCLEPPO &amp; C. s.n.c.                      A meno di ogni altra ditta specializzata in copia, riproduzione o ristampa è vietata senza la propria esplicita autorizzazione.</p>		
<p>Dimensioni in mm. (sempre in millimetri) - Dimensioni in pollici (sempre in pollici) - Spessore in mm.</p>		
CONSEGNA N°	DISSEGNO DA	SCALA
PO05 - 05	VERIFICATO DA	REV. N°
	APPROVATO DA	DEL
		12-24-05
		ACID (CuCl <sub>2</sub> ) ETCHING Line
		Mod. 650/05/P-30
		RIGHT to LEFT
FILE	DATA EMISSIONE	NOTE
PO05-05_LAYOUT.dwg	05-05-05	LAYOUT
		CODICE

Acid (CuCl<sub>2</sub>) ETCHING Line Mod. 650/05/P-30 (RIGHT to LEFT)



← TRAVEL DIRECTION →



- M -> Conveyor Motor
- LS -> Active Length
- AXT -> Worktable
- (1) -> Conveyor Width
- (2) -> Useful Width

OCCLEFFO & C. s.n.c.  
Machinery and system for PCB's

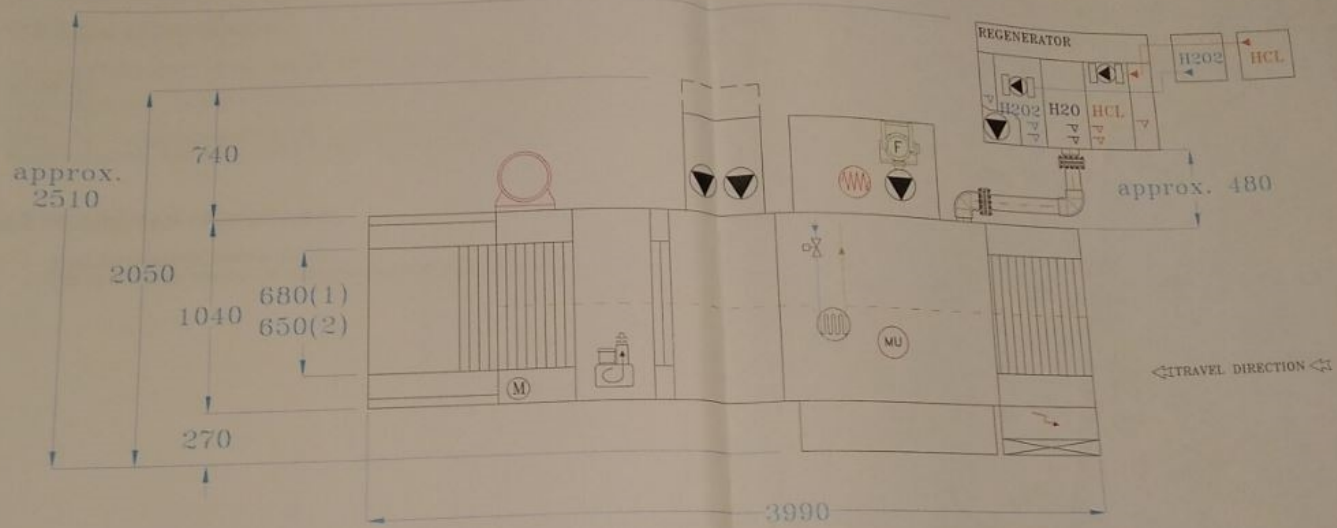
Line LENGTH : 3990 mm.



PRODOTTORE	MODELLO	DESCRIZIONE	REVISIONE	DATA
OCCLEFFO & C. s.n.c.	650/05/P-30	Acid (CuCl <sub>2</sub> ) ETCHING Line	01	12-05-05
PRODOTTORE	MODELLO	DESCRIZIONE	REVISIONE	DATA
OCCLEFFO & C. s.n.c.	650/05/P-30	Acid (CuCl <sub>2</sub> ) ETCHING Line	01	12-05-05
PRODOTTORE	MODELLO	DESCRIZIONE	REVISIONE	DATA
OCCLEFFO & C. s.n.c.	650/05/P-30	Acid (CuCl <sub>2</sub> ) ETCHING Line	01	12-05-05

**KAWA**  
 GmbH  
 Leiterplattentechnik / Industrievertretung

Acid (CuCl<sub>2</sub>) ETCHING Line Mod. 650/05/P-30 (RIGHT to LEFT)



M → Conveyor Motor  
 LS → Active Length  
 AXT → Worktable  
 (1) → Conveyor Width  
 (2) → Useful Width

**OCCLEPPO & C. s.n.c.**  
 Machinery and systems for PCB's


TOP VIEW	PVC	SCALE	NOTE
POB	D.T.M.	MATERIALS	NOTE
<p><b>OCCLEPPO &amp; C. s.n.c.</b></p> <p>COMMESSA N° 05</p> <p>DESIGNATO DA SCALA</p> <p>VERIFICATO DA REV. N°</p> <p>A.K. 1</p> <p>DESIGNO N° APPROVATO DA APPROVAZIONE</p> <p>05F0048A</p> <p>FILE DATA DIMENSIONE</p> <p>POB-05_LAYOUT.dwg 05-03-05 LAYOUT</p> <p>OCCLEPPO &amp; C. s.n.c. Via Lago 38, 41018 CASALECCHIO (MO) ITALIA</p>			





## 2.3 Features

Working width	650 mm.
Working height	960 ± 20 mm.
Conveyor speed	0,15 – 0,7 mt./min.
Maximum useable thickness	5 mm
Minimum useable thickness	0,1 mm
Power supply	220/400 V ± 10%, 50 Hz, 3PH + N + G
Installed power	21 kW
Operating voltage	110 VAC
Cooling water temperature	max. 10°C
Water pressure	max. 4 bar
Compressed air pressure	6 + 8 bar

## 2.4 Line components

The line consists in the following modules (working direction from right to left).

Module A → ACID (CuCl<sub>2</sub>) ETCHING

Module B → CASCADE RINSING including two 2 spraying stages with pumps

Module C → DRYER

Module D → Acid SOLUTION REGENERATOR

Module A → Acid ( $\text{CuCl}_2$ ) ETCHING + Acid SOLUTION REGENERATOR

- Module made of PVC
- Metallic parts made of TITANIUM

# KAWA

GmbH

Leiterplattentechnik / Industrievertretung

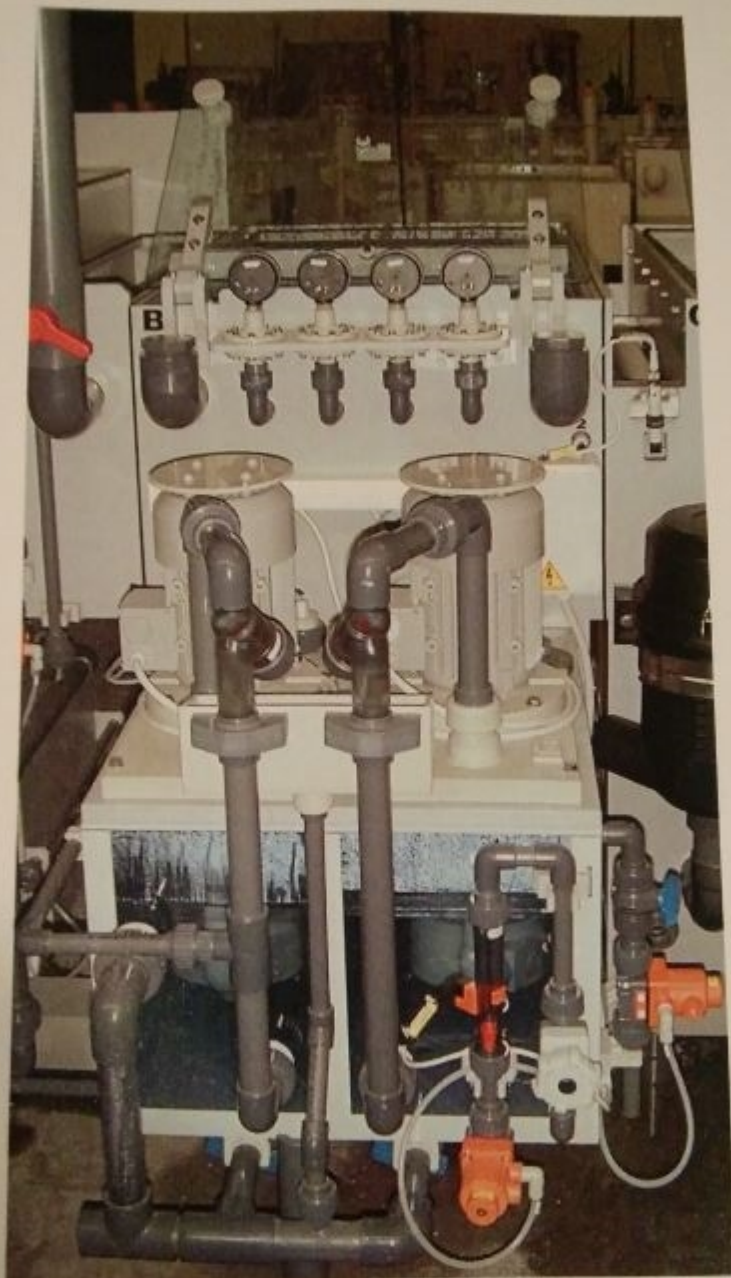
Realized by OCCLEPPO S.R.L. – forbidden distribution and reproduction  
without explicit written authorization

Revision of 40/05/05

Page 12 of



Module B → CASCADE RINSING including two stages with pumps



Module made of PVC  
Metallic parts made of TITANIUM

KAWA

GmbH

Realized by OCCLEPPO S.R.L. – forbidden distribution and reproduction  
without explicit written authorization

Revision of 10/05/05

Leiterplattentechnik / Industrievertretung

Page



## Module C → DRYER



- Module made of PP
- Metallic parts made of STAINLESS STEEL

Realized by OCCLEPPO S.R.L. – forbidden distribution and reproduction  
without explicit written authorization

Revision of 10/05/05

KAWA GmbH  
Leiterplattentechnik / Industrievertretung