

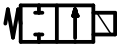



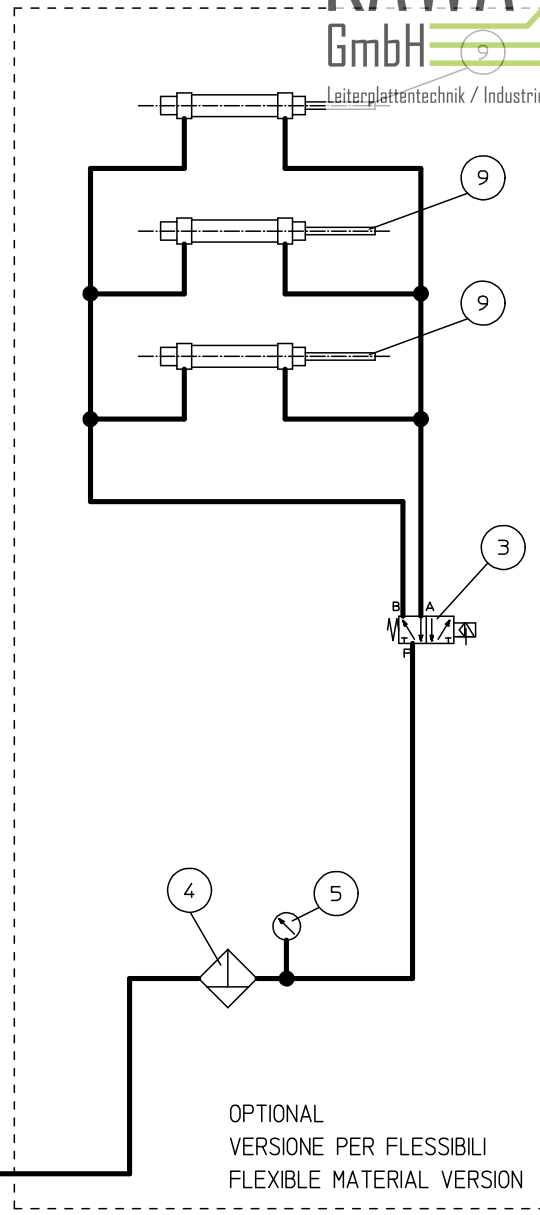
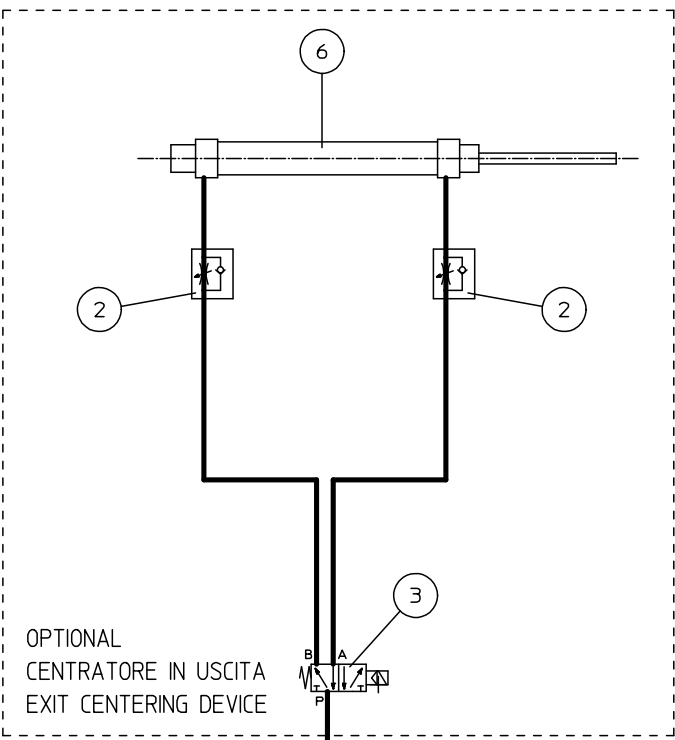
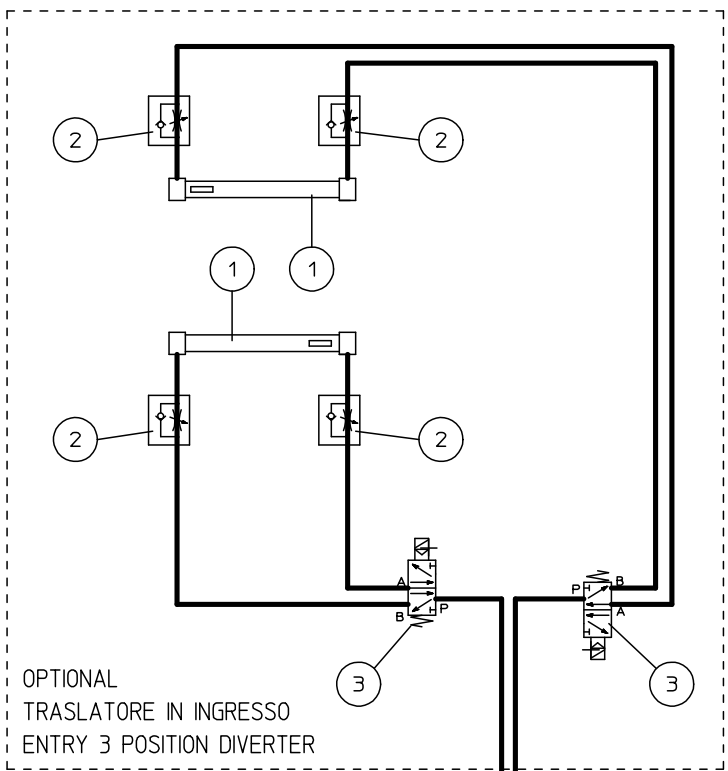


-  PUMP
-  FILTER
-  SOLENOID VALVE
-  FLOWMETER
-  VALVE
-  CENTRIFUGAL CLEANER

Dalla macchina - from machine  
 modifiche - modifications  
 A B

<b>pola e massa</b>	
OVADA (AL) ITALIA	
disegno n° dwg n°	SI-545 /
cod. materiale material ref.	/ /

<b>POMICE 'MEC'</b>				
Pomice in circolo chiuso				
I° Lavaggio bassa pressione				
II° Lavaggio bassa pressione				
III° Lavaggio bassa pressione				
quantita' quantity	/	peso grezzo gross weight	/	data date
dis. scala scale dwg	/	trattamento treatment	/	12-05-03



- 1) CILINDRO
- 2) REGOLATORE DI FLUSSO
- 3) ELETTROVALVOLA
- 4) FILTRO ARIA
- 5) MANOMETRO
- 6) CILINDRO
- 7) VALVOLA PNEUMATICA
- 8) ELETTROVALVOLA
- 9) CILINDRO

⊙ ATTACCO ARIA COMPRESSA  
 CONNECTION TO COMPRESSED SUPPLY MAINS

Dalla macchina - from machine  
 modifiche - modifications

 OVADA (AL) ITALIA		SCHEMA IMPIANTO PNEUMATICO POMICE "PEM" CON TRASLATORE + CENTRATORE			
		PNEUMATIC DIAGRAM "PEM" PUMICE WITH DIVERTER + JOGGER			
disegno n° dwg n°	SI-578	quantita' quantity	/	materiale material	/
cod. materiale material ref.	/	dis. scala scale dwg	/	peso grezzo gross weight	/
				trattamento treatment	/
				data date	17/11/03