

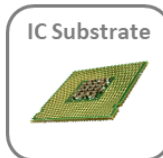


ALTIX

ACURA
PREMIUM

KAWA
GmbH 
Leiterplattentechnik / Industrievertretung

ENHANCED CONTACT PRINTING by ALTIX



- ✓ Inner-Layer
- ✓ Outer-Layer
- ✓ Soldermask (PSR)

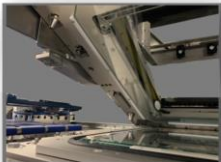
ACURA PREMIUM SERIES: MULTI-PROCESS DOUBLE SIDED SIMULTANEOUS EXPOSURE

Adaptability

Adaptability is at the center of the design. The machine boasts an amazing compact footprint considering the machine is double-sided.

Furthermore, Industry 4.0 integration with existing systems makes installation a breeze.

Moreover, glassmask and mylar artwork compatibility ensures maximum versatility. Finally, the wide-angle rocking frame makes the operator's life easier by facilitating cleaning.



Reliable Productivity

On account of Altix's double-sided simultaneous exposure technology, the machine delivers up to 4 or 5 panels/minute while saving energy thanks to its LedLight™ durable UV sources.

In addition, the equipment's robust architecture coupled with our myAltix Customer Service Portal ensures maximum reliability.



Precision Control

The machine's precision capabilities described below are accompanied by a dual-screen HMI for maximum operator control. Meanwhile, the enhanced vacuum management contributes to our high accuracy registration system.

High Accuracy Registration System:

I/L: $\pm 5\mu\text{m}$ | $\pm 0.2\text{mil}$

Front to Back

O/L & S/M: $\pm 8\mu\text{m}$ | $\pm 0.3\text{mil}$

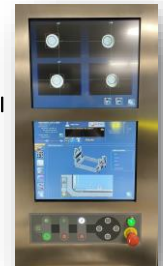
Image to Panel

High Resolution:

Line & Space

I/L & O/L : $25\mu\text{m}$ | 1mil

S/M: $50\mu\text{m}$ | 2mil



Acura Premium Series



Dual Screen



Rocking Upper Frame



Small Footprint



Ergonomic

Possibility to switch both screens



Wide opening angle

Easy and effortless way to check the exposure room



Compact machine

Architecture optimized for a reduced footprint



Effective monitoring

Displays all data and cameras' field of view



Efficient cleaning

Allows effective glass and artwork clean-up



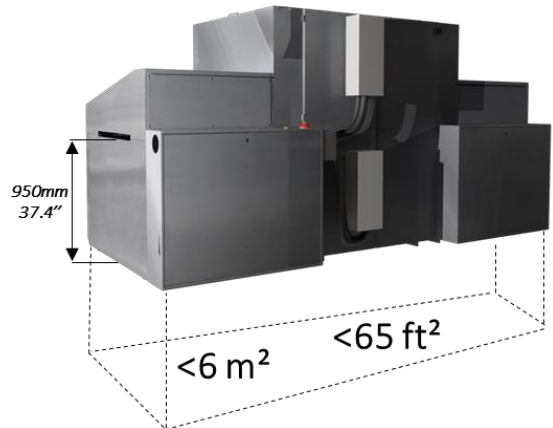
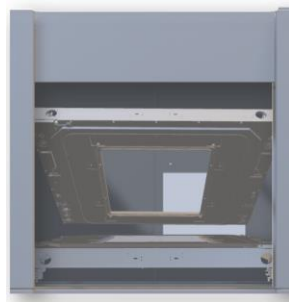
Conveyor height

Standard PCB height pass



Multi-task

Makes it easier to use multiple functions



Innovation Highlights



Full Vacuum Monitoring



Ergonomic & Clean Appearance



UV Light Source



Artworks vacuum
Independent digital level



Robust structure
Full stainless steel body



LedLight™ Compatible



Vacuum between glasses
Live mode available for on-demand monitoring



Safer transportation
Rails integrated to ease handling



ColliLight™ Compatible



Advantages of Altix Simultaneous Double-Sided Exposure



Artworks compatibility check



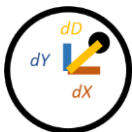
Both artwork under the same environmental conditions



Alignment checked before exposure



Minimal set-up time: <2min.



Better accuracy & repeatability
top/bottom $\pm 5\mu\text{m}$



Minimum risk: no flipping station

Acura Premium Series Specifications

Application	Inner Layer (I/L)	Outer Layer (O/L)	I/L & O/L	Soldermask (PSR)
Exposure Area	Up to 610 x 762mm		Up to 24 x 30"	
Panel Thickness	0.05 - 6mm		0.002 - 0.236"	
Resolution	Min. Dam 25µm Min. Dam 1mil			Min. Dam 50µm Min. Dam 2mil
Light Engine	LedLight™ ColliLight™ (5kW or 8kW)			Mach 5®
Light Intensity	≥ 50mW/cm ² ≥ 25mW/cm ² * or ≥ 40mW/cm ² *			≥ 150mW/cm ²
Exposure Spectrum	365nm 350-430nm			Up to 5 LED Wavelengths 365 to 435nm
Exposure Contact	Soft or Hard Contact Vacuum		CMI™ Available	
Throughput**	Up to 5 panels/min			Up to 4 panels/min
Alignment (After Vacuum)	±5µm ±0.20mil AW/AW ±8µm ±0.32mil AW/Web ±3µm ±0.12mil Repeatability			±8µm ±0.32mil Image to Panel
Software	ALTIX Imaging Suite with Dual 17" Touch Screen			
Temperature Control	Exposure Area Cooling System – Room Temperature [0 ; +3°C]			
Air Supply	6-7 bars		1.5m ³ /min	
Power Consumption	6kW 17kW or 25kW			12kW – Chiller Included
Water Supply	20-30L/min 20-30L/min or 50-80L/min @ 3 bars			5L/min
Machine Weight	2,200kg	4850lbs	4,750kg	10,472lbs
				2,500kg 5,512lbs

LedLight™MACH5 2020

ALDS-Power4+™ 2018

LedLight™MACH3 2017

ALDS-Power4™ 2016

ALDS 2015

LedLight™ 2012

OptiLight™ 2009

Diffuse™ 1997

ColliLight™ 1992

Product Launches

2021 Acura Premium Series

2019 AdixSA neo
AdixRtR

2018 AdixCS/F
AdixPT/F

2017 Afosa LedLightMach3
Acura LedLightMach3

2016 AcuraPremium

2015 Adix SA

2014 AcuReel

2013 Afosa LED

2012 AcuraDSS

2011 AcuraLedLight

2007 Acura

2005 Arrow

2002 Afosaie

1996/98 Evol2b
Evol2b RtR

1993 Evolution1

Manufacturing, Sales & Service: Europe

Altix France –HQ

 Email: central@altix.fr

KAWA GmbH

 E-Mail: kawa@kawa-gmbh.com

www.altix.fr
www.kawa-gmbh.com
