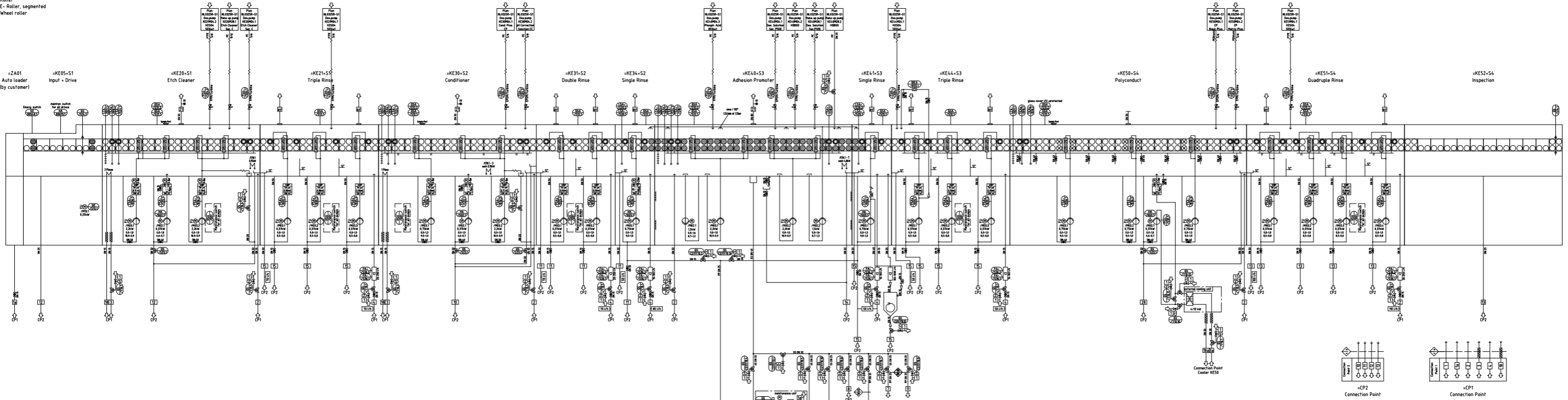
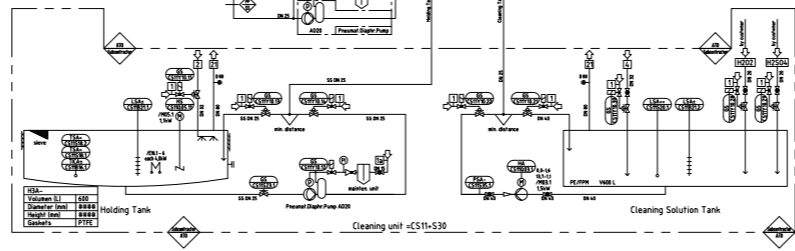


Walzenlegende:

- PP-Roller
- ⊙ CPDM-Roller
- ⊙ SS-Roller
- ⊙ PTFE-Roller, segmented
- ⊙ PP-Wheel roller



URS	=ZA01	=KE05	=KE20	=KE21	=KE30	=KE31	=KE34	=KE40	=KE41	=KE44	=KE50	=KE51	=KE52
QPS-Nr.	-	021009-001	021009-002	021009-003	021009-004	021009-005	021009-006	021009-007	021009-008	021009-009	021009-010	021009-011	021009-012
Beh.-Nr.	-	01-00-01-138	01-00-01-034	01-00-02-527	01-00-01-957	01-00-02-528	01-01-02-119	01-01-01-297	01-01-02-111	01-00-02-514	01-00-02-515	01-00-02-515	01-00-04-193
Chamber length	-	586	152	152	152	578	144	152	178	178	152	152	152
Filteractive length	-	960	-	960	-	1192	-	1192	-	1936	-	-	-
Wheel diam.	-	99	-	99	-	99	-	99	-	99	-	-	-
Wheel volume	-	297	-	297	-	297	-	297	-	297	-	-	-
Temperature	-	30	-	60	-	90	-	90	-	20	-	-	-
material	-	PP	SS	SS	SS	SS	SS	SS	SS	SS	SS	SS	SS
all metal parts	-	SS	SS	SS	SS	SS	SS	SS	SS	SS	SS	SS	SS
wheel axles	-	CFK	CFK	CFK	CFK	CFK	CFK	CFK	CFK	CFK	CFK	CFK	SS
axle seals	-	CFDM	CFDM	CFDM	CFDM	CFDM	CFDM	CFDM	CFDM	CFDM	CFDM	CFDM	CFDM
Other informations	by customer	-	-	-	-	-	-	-	-	-	-	-	-



Workflow: left/right

Order	Date	Name	Address/Modification
c	2013.05.06	Feuch	Modification of installation
b	2013.05.06	Feuch	Modification of installation
a	2013.05.06	Feuch	Modification of engineering

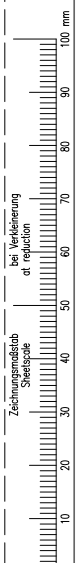
Kunde / Customer	Standort / Location of a plant	Date	Name
UNIPATE CP/CuSlp2	Transportsystem UTS XL	13.12.2013	Feuch

Autogramm/Plant No.	Beit./Drawn by	Gepr./Appr. by	Feuch
521009	Feuch	Feuch	Drafter

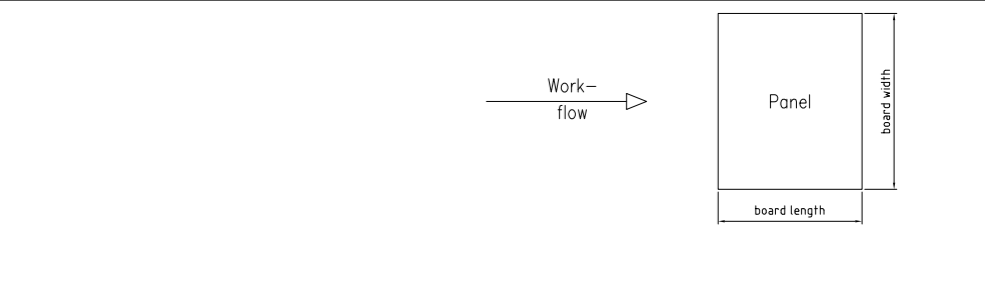
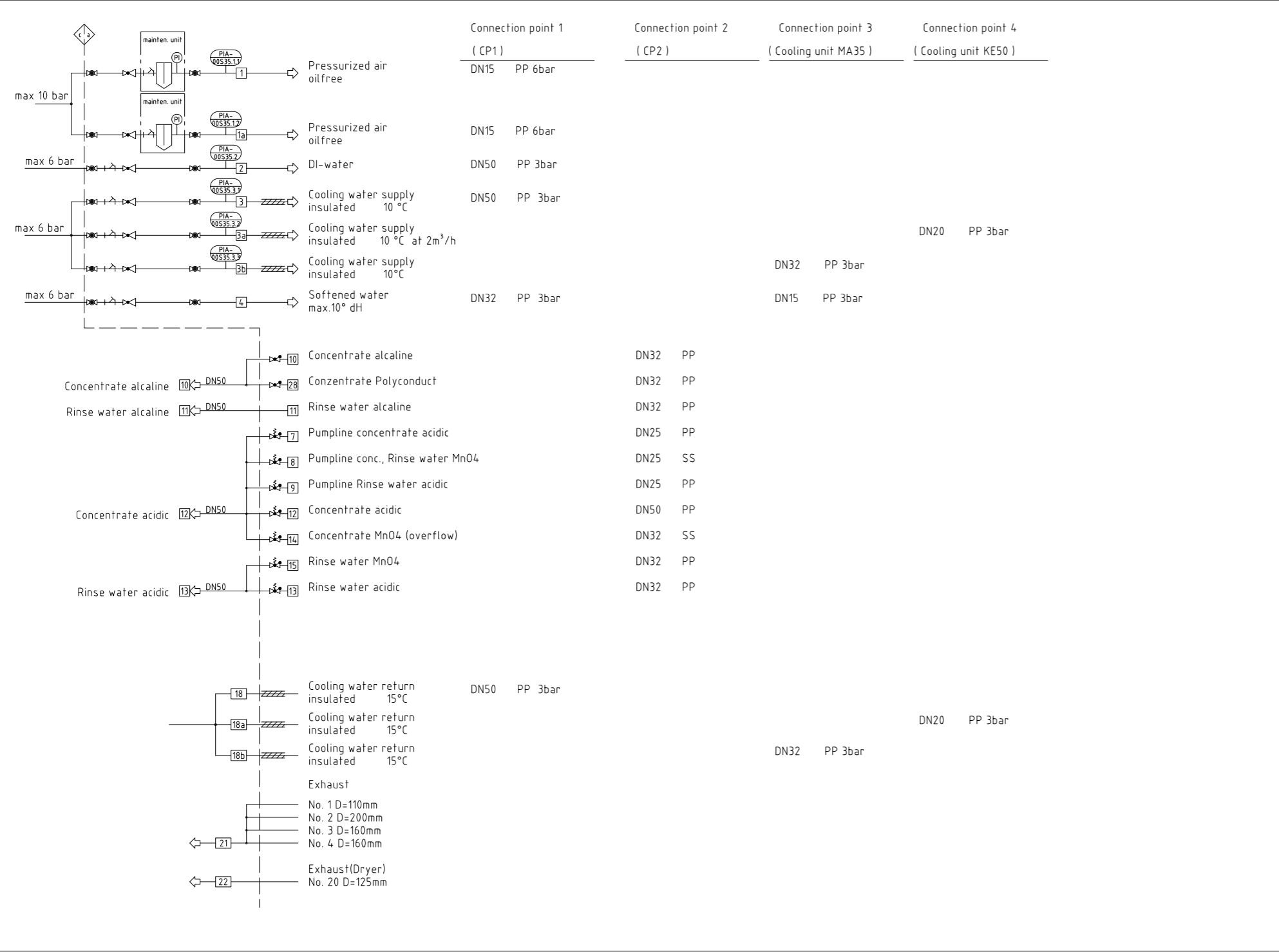
Auftraggeber/Order No.	Status	Initiated
521009	Initiated	Feuch

Zeichnungs-Nr./Drawing No.	Scale
521009RS1	1:1

Copying of this document, and giving it to others and the use or communications of the contents thereof, are forbidden without express authority. Offenders are liable to the payment of damages. All rights are reserved in the event of the grant of a patent or the registration of a utility model or design.



*Weitergabe sowie Vervielfältigung dieses Unterlages, Verwertung und Mitteilung ihres Inhalts nicht gestattet, soweit nicht ausdrücklich zugestanden. Zuwiderhandlungen verpflichten zu Schadenersatz. Alle Rechte für den Fall der Patent erteilung oder Gebrauchsmuster-Ertragung vorbehalten.



Plant Data:			
Workflow:	left/right	Process speed:	1,0 [m/min]
Conveyor width	700 [mm]	Board pass height:	965 [mm]
Voltage	380 [V]	Frequency	50 [Hz]
		System (Network)	TN-S
Board width:	min : 355 [mm]	max :	535 [mm]
Board length:	min : 360 [mm]	max :	610 [mm]
Board thickness	min : 0,5 [mm]	max :	2,4 [mm]
Thickness Laminat	- [mm]	Cu-Coating	0,005 - 0,018 [mm]
Diameter Hole			0,1 - 6,3 [mm]
Diameter Blind Vias	0,1 - 0,3 [mm]	Depth Blind Vias	0,075 - 0,1 [mm]

Workflow: left/right

c	Bearb./Mode Geprüft/App.V	28.09.2015 28.09.2015	Gomez s.c.	Modification of installation	
b	Bearb./Mode Geprüft/App.V	01.08.2014 01.08.2014	Gomez s.c.	Modification of production	
a	Bearb./Mode Geprüft/App.V	12.06.2014 12.06.2014	A.Schatz s.c.	modification of engineering	
Index	Date	Name	Änderung/Modification		
Kunde / Customer					
Standort / Location of a plant					
Raumnummer/Hall No.	NL0325RN1G1	Date	21.01.2014	Name	Danzer
Anlagennummer/Plant No.	521009	Bearb./Drawn by	28.01.2014	A.Schatz	
Auftragsnummer/Order No.	52100901	Geprüft/App.V	Installed		
Auftragsnr./Kunde/Order No./Customer	Status		Installed		
Maßstab/ Scale	1:2			Feucht	
UNIPLATE CP/Cu6lp2 1m/min Transportsystem UTS XL			Zeichnungs-Nr. Drawing-No. 521009RS3 521009RS3.dwg		

